

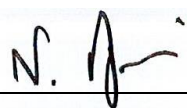


Pennine Academies Yorkshire

Child Protection & Safeguarding Policy

Date Policy Written:	July 2022
Date Policy Ratified:	8 July 2022
Date Policy to be Reviewed:	July 2023

Signed by:

A handwritten signature in black ink, appearing to be 'N. J.', is written over a light blue rectangular background. Below the signature is a horizontal line.

Chair of Trustees

Date: 08.07.2022

Contents

Statement of intent

Acronyms

1. Definitions
2. Legal framework
3. Roles and responsibilities
4. Multi-agency working
5. Early help
6. Abuse and neglect
7. Domestic abuse
8. Homelessness
9. Children missing from education
10. Child abduction and community safety incidents
11. Child criminal exploitation (CCE)
12. Cyber-crime
13. Child sexual exploitation (CSE)
14. Modern slavery
15. FGM
16. Forced marriage
17. Radicalisation
18. Pupils with family members in prison
19. Pupils required to give evidence in court
20. Mental health
21. Peer-on-peer abuse
22. Serious violence

23. Online safety and personal electronic devices
24. Sexting and the sharing of indecent images
25. Context of safeguarding incidents
26. Pupils potentially at greater risk of harm
27. Use of school premises for non-school activities
28. Alternative provision
29. Work experience
30. Homestay exchange visits
31. Concerns about pupils
32. Managing referrals
33. Concerns about staff and safeguarding practices
34. Allegations of abuse against staff
35. Communication and confidentiality
36. Safer recruitment
37. Single central record (SCR)
38. Training
39. Monitoring and review

Appendices

- A. Staff Disqualification Declaration
- B. Safeguarding Reporting Process

Statement of intent

Pennine Academies Yorkshire is committed to safeguarding and promoting the physical, mental and emotional welfare of every pupil, both inside and outside of the school premises. We implement a whole-school preventative approach to managing safeguarding concerns, ensuring that the wellbeing of pupils is at the forefront of all action taken.

This policy sets out a clear and consistent framework for delivering this promise, in line with safeguarding legislation and statutory guidance. It will be achieved by:

- Ensuring that members of the trust board, the headteacher and staff understand their responsibilities under safeguarding legislation and statutory guidance, are alert to the signs of child abuse, and know to refer concerns to the DSL.
- Teaching pupils how to keep safe and recognise behaviour that is unacceptable.
- Identifying and making provision for any pupil that has been subject to, or is at risk of, abuse, neglect, or exploitation.
- Creating a culture of safer recruitment by adopting procedures that help deter, reject or identify people who might pose a risk to children.
- Ensuring that the headteacher and any new staff and volunteers are only appointed when all the appropriate checks have been satisfactorily completed.

The DSL in the school/trust are clearly indicated in posters around the school/trust.

Acronyms

This policy contains a number of acronyms used in the Education sector. These acronyms are listed below alongside their descriptions.

Acronym	Long form	Description
CCE	Child criminal exploitation	A form of abuse where an individual or group takes advantage of an imbalance of power to coerce, manipulate or deceive a child into taking part in criminal activity in exchange for something the victim needs or wants, for the financial advantage or other advantage of the perpetrator or facilitator, and/or through violence or the threat of violence.
CSCS	Children's social care services	The branch of the local authority that deals with children's social care.
CSE	Child sexual exploitation	A form of sexual abuse where an individual or group takes advantage of an imbalance of power to coerce, manipulate or deceive a child into sexual activity in exchange for something the victim needs or wants, for the financial advantage, increased status or other advantage of the perpetrator or facilitator, and/or through violence or the threat of violence.
DBS	Disclosure and barring service	The service that performs the statutory check of criminal records for anyone working or volunteering in a school.
DfE	Department for Education	The national government body with responsibility for children's services, policy and education, including early years, schools, higher and further education policy, apprenticeships and wider skills in England.
DPO	Data protection officer	The appointed person in school with responsibility for overseeing data protection strategy and implementation to ensure compliance with the UK GDPR and Data Protection Act.
DSL	Designated safeguarding lead	A member of the senior leadership team who has lead responsibility for safeguarding and child protection throughout the school.
EEA	European Economic Area	The Member States of the European Union (EU) and three countries of the European Free Trade Association (EFTA) (Iceland, Liechtenstein and Norway; excluding Switzerland).
EHC plan	Education, health and care plan	A funded intervention plan which coordinates the educational, health and care needs for pupils who have significant needs that impact on their learning and access to education. The plan identifies any additional support needs or interventions and the intended impact they will have for the pupil.
ESFA	Education and Skills Funding Agency	An agency sponsored by the Department for Education with accountability for funding education and skills training for children, young people and adults.

FGM	Female genital mutilation	All procedures involving the partial or total removal of the external female genitalia or other injury to the female genital organs. FGM is illegal in the UK and a form of child abuse with long-lasting harmful consequences.
UK GDPR	UK General Data Protection Regulation	Legislative provision designed to strengthen the safety and security of all data held within an organisation and ensure that procedures relating to personal data are fair and consistent.
HBA	'Honour-based' abuse	So-called 'honour-based' abuse involves crimes that have been committed to defend the honour of the family and/or community.
HMCTS	HM Courts and Tribunals Service	HM Courts and Tribunals Service is responsible for the administration of criminal, civil and family courts and tribunals in England and Wales. HMCTS is an executive agency, sponsored by the Ministry of Justice.
IICSA	Independent Inquiry into Child Sexual Abuse	The Independent Inquiry into Child Sexual Abuse is analysing case files from the Disclosure and Barring Service to learn more about the behaviours of perpetrators who have sexually abused children in institutions, and to understand institutional responses to these behaviours.
KCSIE	Keeping children safe in education	Statutory guidance setting out schools and colleges' duties to safeguard and promote the welfare of children.
LA	Local authority	A local government agency responsible for the provision of a range of services in a specified local area, including education.
LAC	Looked-after children	Children who have been placed in local authority care or where children's services have looked after children for more than a period of 24 hours.
LGBTQ+	Lesbian, gay, bisexual, transgender and queer plus	Term relating to a community of people, protected by the Equality Act 2010, who identify as lesbian, gay, bisexual or transgender, or other protected sexual or gender identities.
MAT	Multi-academy trust	A trust established to undertake strategic collaboration and provide education across a number of schools
NPCC	The National Police Chiefs' Council	The National Police Chiefs' Council is a national coordination body for law enforcement in the United Kingdom and the representative body for British police chief officers.
PLAC	Previously looked-after children	Children who were previously in local authority care or were looked after by children's services for more than a period of 24 hours. PLAC are also known as care leavers.
PSHE	Personal, social and health education	A non-statutory subject in which pupils learn about themselves, other people, rights, responsibilities and relationships.

PHE	Public Health England	An executive agency of the Department of Health and Social Care which aims to protect and improve the nation's health and wellbeing.
RSHE	Relationships, sex and health education	A compulsory subject from Year 7 for all pupils. Includes the teaching of sexual health, reproduction and sexuality, as well as promoting positive relationships.
SCR	Single central record	A statutory secure record of recruitment and identity checks for all permanent and temporary staff, proprietors, contractors, external coaches and instructors, and volunteers who attend the school in a non-visitor capacity.
SENCO	Special educational needs coordinator	A statutory role within all schools maintaining oversight and coordinating the implementation of the school's special educational needs policy and provision of education to pupils with special educational needs.
SLT	Senior leadership team	Staff members who have been delegated leadership responsibilities in a school.
TRA	Teaching Regulation Agency	An executive agency of the DfE with responsibility for the regulation of the teaching profession.
VSH	Virtual school head	Virtual school heads are in charge of promoting the educational achievement of all the children looked after by the local authority they work for, and all children who currently have, or previously had, a social worker.

1. Definitions

The terms **“children”** and **“child”** refer to anyone under the age of 18.

For the purposes of this policy, **“safeguarding and protecting the welfare of children”** is defined as:

- Protecting pupils from maltreatment.
- Preventing the impairment of pupils’ mental and physical health or development.
- Ensuring that pupils grow up in circumstances consistent with the provision of safe and effective care.
- Taking action to enable all pupils to have the best outcomes.

For the purposes of this policy, **“consent”** is defined as having the freedom and capacity to choose to engage in sexual activity. Consent may be given to one sort of sexual activity but not another, and can be withdrawn at any time during sexual activity and each time activity occurs. A person only consents to a sexual activity if they agree by choice to that activity, and has the freedom and capacity to make that choice. Children under the age of 13 can never consent to any sexual activity. The age of consent is 16.

For the purposes of this policy, **“sexual violence”** refers to the following offences as defined under the Sexual Offences Act 2003:

- **Rape:** A person (A) commits an offence of rape if they intentionally penetrate the vagina, anus or mouth of another person (B) with their penis, B does not consent to the penetration, and A does not reasonably believe that B consents.
- **Assault by penetration:** A person (A) commits an offence if they intentionally penetrate the vagina or anus of another person (B) with a part of their body or anything else, the penetration is sexual, B does not consent to the penetration, and A does not reasonably believe that B consents.
- **Sexual assault:** A person (A) commits an offence of sexual assault if they intentionally touch another person (B), the touching is sexual, B does not consent to the touching, and A does not reasonably believe that B consents.
- **Causing someone to engage in sexual activity without consent:** A person (A) commits an offence if they intentionally cause another person (B) to engage in an activity, the activity is sexual, B does not consent to engaging in the activity, and A does not reasonably believe that B consents. This could include forcing someone to strip, touch themselves sexually, or to engage in sexual activity with a third party.

For the purposes of this policy, **“sexual harassment”** refers to unwanted conduct of a sexual nature that occurs online or offline, inside or outside of school. Sexual harassment is likely to violate a pupil’s dignity, make them feel intimidated, degraded or humiliated, and create a hostile, offensive, or sexualised environment. If left unchallenged, sexual harassment can create an atmosphere that normalises inappropriate behaviour and may lead to sexual violence. Sexual harassment can include, but is not limited to:

- Sexual comments, such as sexual stories, lewd comments, sexual remarks about clothes and appearance, and sexualised name-calling.
- Sexual “jokes” and taunting.

- Physical behaviour, such as deliberately brushing against someone, interfering with someone's clothes, and displaying images of a sexual nature.
- Online sexual harassment, which may be standalone or part of a wider pattern of sexual harassment and/or sexual violence. This includes:
 - The consensual and non-consensual sharing of nude and semi-nude images and/or videos.
 - Sharing unwanted explicit content.
 - Upskirting.
 - Sexualised online bullying.
 - Unwanted sexual comments and messages, including on social media.
 - Sexual exploitation, coercion, and threats.

For the purposes of this policy, **“upskirting”** refers to the act, as identified the Voyeurism (Offences) Act 2019, of taking a picture or video under another person's clothing, without their knowledge or consent, with the intention of viewing that person's genitals or buttocks, with or without clothing, to obtain sexual gratification, or cause the victim humiliation, distress or alarm. Upskirting is a criminal offence. Anyone, including pupils and staff, of any gender can be a victim of upskirting.

For the purposes of this policy, the **“consensual and non-consensual sharing of nude and semi-nude images and/or videos”**, colloquially known as **“sexting”**, is defined as the sharing between pupils of sexually explicit content, including indecent imagery. For the purposes of this policy, **“indecent imagery”** is defined as an image which meets one or more of the following criteria:

- Nude or semi-nude sexual posing
- A child touching themselves in a sexual way
- Any sexual activity involving a child
- Someone hurting a child sexually
- Sexual activity that involves animals

2. Legal framework

This policy has due regard to all relevant legislation and statutory guidance including, but not limited to, the following:

Legislation

- Children Act 1989
- Children Act 2004
- Safeguarding Vulnerable Groups Act 2006
- The Education (School Teachers' Appraisal) (England) Regulations 2012 (as amended)
- Sexual Offences Act 2003
- Female Genital Mutilation Act 2003 (as inserted by the Serious Crime Act 2015)
- Equality Act 2010
- Counter-Terrorism and Security Act 2015
- The UK General Data Protection Regulation (UK GDPR)
- Data Protection Act 2018

- The Childcare (Disqualification) and Childcare (Early Years Provision Free of Charge) (Extended Entitlement) (Amendment) Regulations 2018
- Voyeurism (Offences) Act 2019
- Domestic Abuse Act 2021

Statutory guidance

- HM Government (2020) 'Multi-agency statutory guidance on female genital mutilation'
- HM Government (2013) 'Multi-agency practice guidelines: Handling cases of Forced Marriage'
- HM Government (2021) 'Channel Duty Guidance: Protecting people vulnerable to being drawn into terrorism'
- DfE (2021) 'Keeping children safe in education 2021'
- DfE (2018) 'Working Together to Safeguard Children'
- DfE (2015) 'The Prevent duty'
- DfE (2018) 'Disqualification under the Childcare Act 2006'

Non-statutory guidance

- DfE (2015) 'What to do if you're worried a child is being abused'
- DfE (2018) 'Information sharing'
- DfE (2017) 'Child sexual exploitation'
- DfE (2021) 'Sexual violence and sexual harassment between children in schools and colleges'
- DfE (2021) 'Recruit teachers from overseas'
- DfE (2020) 'Sharing nudes and semi-nudes: advice for education settings working with children and young people'

This policy operates in conjunction with the following school policies:

- Anti-Bullying Policy
- Acceptable Use of ICT
- Data Storage, Retention and Disposal
- Data Protection Policy
- **LAC Policy**
- Whistleblowing Policy
- Allegations of Abuse Against Staff Policy
- Safer Recruitment Policy
- Staff Code of Conduct
- Behavioural Policy

3. Roles and responsibilities

All staff have a responsibility to:

- Consider, at all times, what is in the best interests of the pupil.
- Maintain an attitude of 'it could happen here' where safeguarding is concerned.
- Provide a safe environment in which pupils can learn.
- Be prepared to identify pupils who may benefit from early help.

- Be aware of the school's systems which support safeguarding, including any policies, procedures, information and training provided upon induction.
- Be aware of the role and identity of the DSL and deputy DSLs.
- Undertake safeguarding training, including online safety training, during their induction – this will be regularly updated.
- Receive and understand child protection and safeguarding (including online safety) updates, e.g. via email, as required, and at least annually.
- Be aware of the local early help process and understand their role in it.
- Be aware of, and understand, the process for making referrals to CSCS, as well as for making statutory assessments under the Children Act 1989 and their role in these assessments.
- Make a referral to CSCS and/or the police immediately, if at any point there is a risk of immediate serious harm to a child.
- Support social workers in making decisions about individual children, in collaboration with the DSL.
- Be aware of and understand the procedure to follow in the event that a child confides they are being abused, exploited or neglected.
- Maintain appropriate levels of confidentiality when dealing with individual cases.
- Reassure victims that they are being taken seriously, that they will be supported, and that they will be kept safe.
- Speak to the DSL if they are unsure about how to handle safeguarding matters and record concerns on CPOMS.
- Be aware of safeguarding issues that can put pupils at risk of harm.
- Be aware of behaviours linked to issues such as drug-taking, alcohol misuse, deliberately missing education, and sharing indecent images, and other signs that pupils may be at risk of harm.

Teachers, including the headteacher, have a responsibility to:

- Safeguard pupils' wellbeing and maintain public trust in the teaching profession as part of their professional duties, as outlined in the 'Teachers' Standards'.

The Trust Board has a duty to:

- Take strategic leadership responsibility for the school's safeguarding arrangements.
- Ensure that the school complies with its duties under the above child protection and safeguarding legislation.
- Guarantee that the policies, procedures and training opportunities in the school are effective and comply with the law at all times.
- Guarantee that the school contributes to multi-agency working in line with the statutory guidance '[Working Together to Safeguard Children](#)'.
- Confirm that the school's safeguarding arrangements take into account the procedures and practices of the LA as part of the inter-agency safeguarding procedures.
- Understand the local criteria for action and the local protocol for assessment, and ensure these are reflected in the school's policies and procedures.
- Comply with its obligations under section 14B of the Children Act 2004 to supply the local safeguarding arrangements with information to fulfil its functions.

- Ensure that staff working directly with children read at least Part one of KCSIE.
- Ensure that staff who do not work directly with children read either Part one or Annex A of KCSIE. **NB:** Individual schools assess which guidance will be most effective for their staff to safeguard and promote the welfare of children.
- Ensure that mechanisms are in place to assist staff to understand and discharge their role and responsibilities in regard to safeguarding children.
- Ensure a senior board level lead takes leadership responsibility for safeguarding arrangements.
- Appoint a member of staff from the SLT to the role of DSL as an explicit part of the role-holder's job description.
- Appoint one or more deputy DSLs to provide support to the DSL, and ensure that they are trained to the same standard as the DSL and that the role is explicit in their job description(s).
- Facilitate a whole-school approach to safeguarding; this includes ensuring that safeguarding and child protection are at the forefront and underpin all relevant aspects of process and policy development.
- Where there is a safeguarding concern, ensure the child's wishes and feelings are taken into account when determining what action to take and what services to provide.
- Ensure systems are in place, children to confidently report abuse, knowing that their concerns will be treated seriously, and they can safely express their views and give feedback; these systems will be well-promoted, easily understood, and easily accessible.
- Ensure that staff have due regard to relevant data protection principles that allow them to share and withhold personal information.
- Ensure that a member of the trust board is nominated to liaise with the LA and/or partner agencies on issues of child protection and in the event of allegations of abuse made against the headteacher or another governor.
- Guarantee that there are effective and appropriate policies and procedures in place.
- Ensure all relevant persons are aware of the school's local safeguarding arrangements, including the trust board itself, the SLT and DSL.
- Make sure that pupils are taught about safeguarding, including protection against dangers online (including when they are online at home), through teaching and learning opportunities, as part of providing a broad and balanced curriculum.
- Adhere to statutory responsibilities by conducting pre-employment checks on staff who work with children, taking proportionate decisions on whether to ask for any checks beyond what is required.
- Ensure that staff are appropriately trained to support pupils to be themselves at school, e.g. if they are LGBTQ+.
- Ensure the school has clear systems and processes in place for identifying possible mental health problems in pupils, including clear routes to escalate concerns and clear referral and accountability systems.
- Guarantee that volunteers are appropriately supervised.
- Make sure that at least one person on any appointment panel has undertaken safer recruitment training.
- Ensure that all staff receive safeguarding and child protection training updates, e.g. emails, as required, but at least annually.

- Certify that there are procedures in place to handle allegations against staff, supply staff, volunteers and contractors.
- Confirm that there are procedures in place to make a referral to the DBS and the Teaching Regulation Agency (TRA), where appropriate, if a person in regulated activity has been dismissed or removed due to safeguarding concerns or would have been had they not resigned.
- Guarantee that there are procedures in place to handle pupils' allegations against other pupils.
- Ensure that appropriate disciplinary procedures are in place, as well as policies pertaining to the behaviour of pupils and staff.
- Ensure that procedures are in place to eliminate unlawful discrimination, harassment and victimisation, including those in relation to peer-on-peer abuse.
- Guarantee that there are systems in place for pupils to express their views and give feedback.
- Establish an early help procedure and ensure all staff understand the procedure and their role in it.
- Appoint a designated teacher to promote the educational achievement of LAC and ensure that this person has undergone appropriate training.
- Ensure that the designated teacher works with the virtual school head (VSH) to discuss how the pupil premium funding can best be used to support LAC.
- Introduce mechanisms to assist staff in understanding and discharging their roles and responsibilities.
- Make sure that staff members have the skills, knowledge and understanding necessary to keep LAC safe, particularly with regard to the pupil's legal status, contact details and care arrangements.
- Put in place appropriate safeguarding responses for pupils who go missing from school, particularly on repeat occasions, to help identify any risk of abuse, neglect or exploitation, and prevent the risk of their disappearance in future.
- Ensure that all members of the trust board have been subject to an enhanced DBS check.
- Create a culture where staff are confident to challenge senior leaders over any safeguarding concerns.

The headteacher has a duty to:

- Ensure that the policies and procedures adopted by the trust board, particularly concerning referrals of cases of suspected abuse and neglect, are followed by staff.
- Provide staff with the appropriate policies and information upon induction.
- Ensure regular supervision takes place for the DSL and any DDSLs

The DSL has a duty to:

- Take lead responsibility for safeguarding and child protection, including online safety.
- Provide advice and support to other staff on child welfare, safeguarding and child protection matters.
- Take part in strategy discussions and inter-agency meetings, and/or support other staff to do so.
- Contribute to the assessment of children, and/or support other staff to do so.

- During term time, be available during school hours for staff to discuss any safeguarding concerns. **NB:** Individual schools, working with the DSL, define what “available” means and whether, in exceptional circumstances, availability via phone, videocall, or other media is an acceptable substitution for in-person availability.
- Arrange, alongside the school, adequate and appropriate cover for any activities outside of school hours or terms.
- Refer cases:
 - To CSCS where abuse and neglect are suspected, and support staff who make referrals CSCS.
 - To the Channel programme where radicalisation concerns arise, and support staff who make referrals to the Channel programme.
 - To the DBS where a person is dismissed or has left due to harm, or risk of harm, to a child.
 - To the police where a crime may have been committed, in line with the National Police Chiefs’ Council (NPCC) guidance.
- Act as a source of support, advice and expertise for all staff.
- Act as a point of contact with the safeguarding partners.
- Liaise with the headteacher to inform them of issues, especially regarding ongoing enquiries under section 47 of the Children Act 1989 and police investigations.
- Liaise with the deputy DSL(s) to ensure effective safeguarding outcomes.
- Liaise with the case manager and the LA designated officer(s) (LADO) for child protection concerns in cases concerning staff.
- Liaise with staff on matters of safety, safeguarding and welfare, including online and digital safety.
- Liaise with staff when deciding whether to make a referral by liaising with relevant agencies so that children’s needs are considered holistically.
- Liaise with the senior mental health lead and, where available, the Mental Health Support Team, where safeguarding concerns are linked to mental health.
- Promote supportive engagement with parents in safeguarding and promoting the welfare of children, including where families may be facing challenging circumstances.
- Work with the headteacher and relevant strategic leads, taking lead responsibility for promoting educational outcomes by knowing the welfare, safeguarding and child protection issues that children in need are experiencing, or have experienced, and identifying the impact that these issues might be having on their attendance, engagement and achievement at school. This includes:
 - Ensuring that the school knows which pupils have or had a social worker.
 - Understanding the academic progress and attainment of these pupils.
 - Maintaining a culture of high aspirations for these pupils.
 - Supporting teachers to provide additional academic support or reasonable adjustments to help these pupils reach their potential.
 - Helping to promote educational outcomes by sharing the information about the welfare, safeguarding and child protection issues these pupils are experiencing with teachers and the SLT.
- Ensure that child protection files are kept up-to-date and only accessed by those who need to do so.

- Ensure that a pupil's child protection file is transferred as soon as possible, and within five days, when transferring to a new school, and consider any additional information that should be shared.
- Ensure each member of staff has access to and understands the school's Child Protection and Safeguarding Policy and procedures – this will be discussed during the staff induction process.
- Work with the trust board to ensure the school's Child Protection and Safeguarding Policy is reviewed annually, and the procedures are updated and reviewed regularly.
- Ensure the school's Child Protection and Safeguarding Policy is available publicly, and parents are aware that the school may make referrals for suspected cases of abuse or neglect, as well as the role the school plays in these referrals.
- Link with safeguarding partner arrangements to make sure that staff are aware of the training opportunities available and the latest local policies on safeguarding.
- Undergo training, and update this training at least every two years.
- Obtain access to resources and attend any relevant or refresher training courses.
- Encourage a culture of listening to children and taking account of their wishes and feelings; this includes understanding the difficulties pupils may have in approaching staff about their circumstances and considering how to build trusted relationships that facilitate communication.
- Support and advise staff and help them feel confident on welfare, safeguarding and child protection matters: specifically, to ensure that staff are supported during the referrals processes; and to support staff to consider how safeguarding, welfare and educational outcomes are linked, including to inform the provision of academic and pastoral support.
- Understand the importance of information sharing, including within school, with other schools, and with the safeguarding partners, other agencies, organisations and practitioners.
- Understand relevant data protection legislation and regulations, especially the Data Protection Act 2018 and the UK GDPR.
- Keep detailed, accurate, secure written records of concerns and referrals, and understand the purpose of this record-keeping.

The designated teacher has a responsibility for promoting the educational achievement of LAC and previously LAC (PLAC), and for children who have left care through adoption, special guardianship or child arrangement orders or who were adopted from state care outside England and Wales.

4. Multi-agency working

The school contributes to multi-agency working as part of its statutory duty. The school is aware of and will follow the local safeguarding arrangements.

The school will be fully engaged, involved, and included in local safeguarding arrangements. Once the school is named as a relevant agency by local safeguarding partners, it will follow its statutory duty to cooperate with the published arrangements in the same way as other relevant agencies. The school will act in accordance with the safeguarding arrangements.

The school will work with CSCS, the police, health services and other services to protect the welfare of its pupils, through the early help process and by contributing to multi-agency plans to provide additional support.

Where a need for early help is identified, the school will allow access for CSCS from the host LA and, where appropriate, a placing LA, for that LA to conduct (or consider whether to conduct) a section 17 or 47 assessment.

The school also recognises the particular importance of inter-agency working in identifying and preventing CSE.

5. Information sharing

The school recognises the importance of proactive information sharing between professionals and local agencies in order to effectively meet pupils' needs and identify any need for early help.

Considering the above, staff will be aware that whilst the UK GDPR and the Data Protection Act 2018 place a duty on schools to process personal information fairly and lawfully, they also allow for information to be stored and shared for safeguarding purposes – data protection regulations do not act as a barrier to sharing information where failure to do so would result in the pupil being placed at risk of harm.

Staff members will ensure that fear of sharing information does not stand in the way of their responsibility to promote the welfare and safety of pupils. If staff members are in doubt about sharing information, they will speak to the DSL or deputy DSL(s).

6. Early help

Early help means providing support as soon as a problem emerges, at any point in a child's life. Any pupil may benefit from early help, but in particular, staff will be alert to the potential need for early help for pupils who:

- Are disabled, have certain health conditions, or have specific additional needs.
- Have SEND, regardless of whether they have a statutory EHC plan.
- Have mental health needs.
- Are young carers.
- Show signs of being drawn into anti-social or criminal behaviour, including gang involvement and association with organised crime groups or county lines.
- Are frequently missing or going missing from care or from home.
- Are at risk of modern slavery, trafficking, or sexual or criminal exploitation.
- Are at risk of being radicalised or exploited.
- Have family members in prison, or are affected by parental offending.
- Are in a family circumstance presenting challenges for them, such as drug and alcohol misuse, adult mental health problems, or domestic abuse.
- Misuse drugs or alcohol.
- Have returned home to their family from care.
- Are at risk of HBA, such as FGM or forced marriage.
- Are privately fostered.
- Are persistently absent from education, including persistent absences for part of the school day.
- Show early signs of abuse and/or neglect in other ways.

The DSL will take the lead where early help is appropriate. This includes liaising with other agencies and setting up an inter-agency assessment as appropriate. The local early help process will be followed as required.

Staff may be required to support other agencies and professionals in an early help assessment, in some cases acting as the lead practitioner. Any such cases will be kept under constant review and consideration given to a referral to CSCS for assessment for statutory services if the pupil's situation is not improving or is worsening.

7. Abuse and neglect

For the purposes of this policy, **"abuse"** is defined as but not limited to, a form of maltreatment of a child which involves inflicting harm or failing to act to prevent harm. Children may be abused in a family, institutional or community setting by those known to them or by others, e.g. via the internet. Abuse can take place wholly online, or technology may be used to facilitate offline abuse. Children may be abused by one or multiple adults or other children.

For the purposes of this policy, **"physical abuse"** is defined as but not limited to, a form of abuse which may involve actions such as hitting, shaking, throwing, poisoning, burning or scalding, drowning, suffocating, or otherwise causing physical harm to a child. Physical abuse can also be caused when a parent fabricates the symptoms of, or deliberately induces, illness in a child.

For the purposes of this policy, **"emotional abuse"** is defined as but not limited to, the persistent emotional maltreatment of a child such as to cause severe and adverse effects on the child's emotional development. This may involve conveying to a child that they are worthless, unloved, inadequate, or valued only insofar as they meet the needs of another person. It may include not giving the child the opportunities to express their views, deliberately silencing them, 'making fun' of what they say or how they communicate. It may feature age or developmentally inappropriate expectations being imposed on children, such as interactions that are beyond their developmental capability, overprotection and limitation of exploration and learning, or preventing the child from participating in normal social interaction. It may involve seeing or hearing the ill-treatment of another. It may involve serious bullying, including cyberbullying, causing the child to frequently feel frightened or in danger, or the exploitation or corruption of children. Some level of emotional abuse is involved in all types of maltreatment of a child, but it may also occur alone.

For the purposes of this policy, **"sexual abuse"** is defined as but not limited to, abuse that involves forcing or enticing a child to take part in sexual activities, not necessarily involving violence, and regardless of whether the child is aware of what is happening. This may involve physical contact, including assault by penetration, or non-penetrative acts, such as masturbation, kissing, rubbing, and touching outside of clothing. It may also include non-contact activities, such as involving children in looking at, or in the production of, sexual images, encouraging children to behave in sexually inappropriate ways, or grooming a child in preparation for abuse. Sexual abuse can be perpetrated by people of any gender and age.

For the purposes of this policy, **"neglect"** is defined as but not limited to, the persistent failure to meet a child's basic physical and/or psychological needs, likely to result in serious impairment of a child's health or development. This may involve a parent or carer failing to provide a child with adequate

food, clothing or shelter (including exclusion from home or abandonment); failing to protect a child from physical or emotional harm or danger; failing to ensure adequate supervision (including through the use of inappropriate caregivers); or failing to ensure access to appropriate medical care or treatment. It may also include neglect of, or unresponsiveness to, a child's basic emotional needs.

All staff will be aware of the indicators of abuse and neglect. All staff will be aware that abuse, neglect and other safeguarding issues are rarely standalone events that can be given a specific label, and multiple issues often overlap one another; therefore, staff will be vigilant and always raise concerns with the DSL. All staff, especially the DSL and deputy DSL(s), will be aware that safeguarding incidents and/or behaviours can be associated with factors outside the school and/or can occur between children outside of these environments; this includes being aware that pupils can be at risk of abuse or exploitation in situations outside their families (extra-familial harms). All staff will be aware of the appropriate action to take following a pupil being identified as at potential risk of abuse and, in all cases, will speak to the DSL if they are unsure.

All staff will be aware that technology is a significant component in many safeguarding and wellbeing issues, including online abuse, cyberbullying, and the sharing of indecent images.

8. Domestic abuse

For the purposes of this policy, and in line with the Domestic Abuse Act 2021, **“domestic abuse”** is defined as but not limited to, abusive behaviour of a person towards another person (including conduct directed at someone else, e.g. the person's child) where both are aged 16 or over and are personally connected. **“Abusive behaviour”** includes physical or sexual abuse, violent or threatening behaviour, controlling or coercive behaviour, economic abuse, psychological or emotional abuse, or another form of abuse. **“Personally connected”** includes people who:

- Are, have been, or have agreed to be married to each other.
- Are, have been, or have agreed to be in a civil partnership with each other.
- Are, or have been, in an intimate personal relationship with each other.
- Each have, or had, a parental relationship towards the same child.
- Are relatives.

The school will recognise the impact of domestic abuse on children, as victims in their own right, if they see, hear or experience the effects of domestic abuse. All staff will be aware of the signs of domestic abuse and follow the appropriate safeguarding procedures where concerns arise.

9. Homelessness

The DSL and deputy DSL(s) will be aware of the contact details and referral routes into the Local Housing Authority so that concerns over homelessness can be raised as early as possible.

Indicators that a family may be at risk of homelessness include:

- Household debt.
- Rent arrears.
- Domestic abuse.
- Anti-social behaviour.
- Any mention of a family moving home because “they have to”.

Referrals to the Local Housing Authority do not replace referrals to CSCS where a child is being harmed or at risk of harm. For 16- and 17-year-olds, homelessness may not be family-based and referrals to CSCS will be made as necessary where concerns are raised.

10. Children missing from education

A child going missing from school is a potential indicator of abuse or neglect and, as such, these children are increasingly at risk of being victims of harm, exploitation or radicalisation. Staff will monitor pupils that go missing from the school, particularly on repeat occasions, and report them to the DSL following normal safeguarding procedures, in accordance with the Children Missing Education Policy. The school will inform the LA of any pupil who fails to attend regularly or has been absent without the school's permission for a continuous period of 10 school days or more.

11. Admissions register

Pupils are placed on the admissions register at the beginning of the first day that is agreed by the school, or when the school has been notified that the pupil will first be attending. The school will notify the LA within 5 days of when a pupil's name is added to the admissions register.

The school will ensure that the admissions register is kept up-to-date and accurate at all times and will inform parents when any changes occur. Two emergency contact details will be held for each pupil where possible. Staff will monitor pupils who do not attend the school on the agreed date and will notify the LA at the earliest opportunity.

If a parent notifies the school that their child will live at a different address, the school will record the following information on the admissions register:

- The full name of the parent with whom the pupil will live
- The new address
- The date from when the pupil will live at that address

If a parent notifies the school that their child will be attending a different school, or is already registered at a different school, the following information will be recorded on the admissions register:

- The name of the new school
- The date on which the pupil first attended, or is due to attend, that school

Where a pupil moves to a new school, the school will use a secure internet system to securely transfer pupils' data.

To ensure accurate data is collected to allow effective safeguarding, the school will inform the LA of any pupil who is going to be deleted from the admission register, in accordance with the Education (Pupil Registration) (England) Regulations 2006 (as amended), where they:

- Have been taken out of the school by their parents, and are being educated outside the national education system, e.g. home education.
- Have ceased to attend the school, and no longer live within a reasonable distance of the premises.

- Have been certified by the school's medical officer as unlikely to be in a fit state of health to attend, before ceasing to be of compulsory school age, and their parent has not indicated the intention to the pupil continuing to attend school after ceasing to be of compulsory school age.
- Have been in custody for a period of more than four months due to a final court order and the school does not reasonably believe they will be returning to the school at the end of that period.
- Have been permanently excluded.

The school will also remove a pupil from the admissions register where the school and LA has been unable to establish the pupil's whereabouts after making reasonable enquiries into their attendance.

If a pupil is to be removed from the admissions register, the school will provide the LA with the following information:

- The full name of the pupil
- The full name and address of any parent with whom the pupil lives
- At least one telephone number of the parent with whom the pupil lives
- The full name and address of the parent with whom the pupil is going to live, and the date that the pupil will start living there, if applicable
- The name of the pupil's new school and the pupil's expected start date there, if applicable
- The grounds for removal from the admissions register under regulation 8 of the Education (Pupil Registration) (England) Regulations 2006 (as amended)

The school will work with the LA to establish methods of making returns for pupils back into the school. The school will highlight to the LA where they have been unable to obtain necessary information from parents, e.g. where an address is unknown. The school will also highlight any other necessary contextual information, including safeguarding concerns.

12. Child abduction and community safety incidents

For the purposes of this policy, **"child abduction"** is defined as the unauthorised removal or retention of a child from a parent or anyone with legal responsibility for the child. Child abduction can be committed by parents and other relatives, other people known to the victim, and strangers.

All staff will be alert to community safety incidents taking place in the vicinity of the school that may raise concerns regarding child abduction, e.g. people loitering nearby or unknown adults conversing with pupils.

Pupils will be provided with practical advice and lessons to ensure they can keep themselves safe outdoors.

13. Child criminal exploitation (CCE)

For the purposes of this policy, **"child criminal exploitation"** is defined as a form of abuse where an individual or group takes advantage of an imbalance of power to coerce, manipulate or deceive a child into taking part in criminal activity, for any of the following reasons:

- In exchange for something the victim needs or wants

- For the financial advantage or other advantage of the perpetrator or facilitator
- Through violence or the threat of violence

Specific forms of CCE can include:

- Being forced or manipulated into transporting drugs or money through county lines.
- Working in cannabis factories.
- Shoplifting or pickpocketing.
- Committing vehicle crime.
- Committing, or threatening to commit, serious violence to others.

The school will recognise that pupils involved in CCE are victims themselves, regardless of whether they have committed crimes, and even if the criminal activity appears consensual. The school will also recognise that pupils of any gender are at risk of CCE.

School staff will be aware of the indicators that a pupil is the victim of CCE, including:

- Appearing with unexplained gifts, money or new possessions.
- Associating with other children involved in exploitation.
- Suffering from changes in emotional wellbeing.
- Misusing drugs or alcohol.
- Going missing for periods of time or regularly coming home late.
- Regularly missing school or education or not taking part.

14. County lines

For the purposes of this policy, “**county lines**” refers to gangs and organised criminal networks exploiting children to move, store or sell drugs and money into one or more areas, locally and/or across the UK.

As well as the general indicators for CCE, school staff will be aware of the specific indicators that a pupil may be involved in county lines, including:

- Going missing and subsequently being found in areas away from their home.
- Having been the victim or perpetrator of serious violence, e.g. knife crime.
- Receiving requests for drugs via a phone line.
- Moving drugs.
- Handing over and collecting money for drugs.
- Being exposed to techniques such as ‘plugging’, where drugs are concealed internally to avoid detection.
- Being found in accommodation they have no connection with or a hotel room where there is drug activity.
- Owning a ‘debt bond’ to their exploiters.
- Having their bank account used to facilitate drug dealing.

Staff will be made aware of pupils with missing episodes who may have been trafficked for the purpose of transporting drugs. Staff members who suspect a pupil may be vulnerable to, or involved in, county lines activity will immediately report all concerns to the DSL.

The DSL will consider referral to the National Referral Mechanism on a case-by-case basis and consider involving local services and providers who offer support to victims of county lines exploitation.

15. Cyber-crime

For the purposes of this policy, **“cyber-crime”** is defined as criminal activity committed using computers and/or the internet. This includes ‘cyber-enabled’ crimes, i.e. crimes that can happen offline but are enabled at scale and at speed online, and ‘cyber-dependent’ crimes, i.e. crimes that can be committed only by using a computer. Crimes include:

- Unauthorised access to computers, known as ‘hacking’.
- Denial of Service attacks, known as ‘booting’.
- Making, supplying or obtaining malicious software, or ‘malware’, e.g. viruses, spyware, ransomware, botnets and Remote Access Trojans with the intent to commit further offence.

All staff will be aware of the signs of cyber-crime and follow the appropriate safeguarding procedures where concerns arise. This may include the DSL referring pupils to the National Crime Agency’s Cyber Choices programme.

16. Child sexual exploitation (CSE)

For the purposes of this policy, **“child sexual exploitation”** is defined as a form of sexual abuse where an individual or group takes advantage of an imbalance of power to coerce, manipulate or deceive a child into sexual activity, for any of the following reasons:

- In exchange for something the victim needs or wants
- For the financial advantage, increased status or other advantage of the perpetrator or facilitator
- Through violence or the threat of violence

The school will recognise that CSE can occur over time or be a one-off occurrence, and may happen without the pupil’s immediate knowledge, e.g. through others sharing videos or images of them on social media. The school will recognise that CSE can affect any pupil who has been coerced into engaging in sexual activities, even if the activity appears consensual; this includes pupils aged 16 and above who can legally consent to sexual activity. The school will also recognise that pupils may not realise they are being exploited e.g. they believe they are in a genuine romantic relationship.

School staff will be aware of the key indicators that a pupil is the victim of CSE, including:

- Appearing with unexplained gifts, money or new possessions.
- Associating with other children involved in exploitation.
- Suffering from changes in emotional wellbeing.
- Misusing drugs or alcohol.
- Going missing for periods of time or regularly coming home late.
- Regularly missing school or education or not taking part.
- Having older boyfriends or girlfriends.
- Suffering from sexually transmitted infections.
- Displaying sexual behaviours beyond expected sexual development.
- Becoming pregnant.

All concerns related to CSE will be managed in line with the school's Child Sexual Exploitation (CSE) Policy.

Where CSE, or the risk of it, is suspected, staff will discuss the case with the DSL. If after discussion a concern remains, local safeguarding procedures will be triggered, including referral to the LA. The LA and all other necessary authorities will then handle the matter to conclusion. The school will cooperate as needed.

17. Modern slavery

For the purposes of this policy, **"modern slavery"** encompasses human trafficking and slavery, servitude, and forced or compulsory labour. This can include CCE, CSE, and other forms of exploitation.

All staff will be aware of and alert to the signs that a pupil may be the victim of modern slavery. Staff will also be aware of the support available to victims of modern slavery and how to refer them to the National Referral Mechanism.

18. FGM

For the purposes of this policy, **"FGM"** is defined as all procedures involving the partial or total removal of the external female genitalia or other injury to the female genital organs. FGM is illegal in the UK and a form of child abuse with long-lasting harmful consequences.

All staff will be alert to the possibility of a pupil being at risk of FGM, or already having suffered FGM. If staff are worried about someone who is at risk of FGM or who has been a victim of FGM, they are required to share this information with CSCS and/or the police. The school's procedures relating to managing cases of FGM and protecting pupils will reflect multi-agency working arrangements.

As outlined in Section 5B of the Female Genital Mutilation Act 2003 (as inserted by section 74 of the Serious Crime Act 2015), teachers are **legally required** to report to the police any discovery, whether through disclosure by the victim or visual evidence, of FGM on a pupil under the age of 18. Teachers failing to report such cases may face disciplinary action. Teachers will not examine pupils, and so it is rare that they will see any visual evidence, but they must personally report to the police where an act of FGM appears to have been carried out. Unless the teacher has a good reason not to, they should also consider and discuss any such case with the DSL and involve CSCS as appropriate. **NB:** This does not apply to any suspected or at-risk cases, nor if the individual is over the age of 18. In such cases, local safeguarding procedures will be followed.

All staff will be aware of the indicators that pupils may be at risk of FGM. While some individual indicators they may not indicate risk, the presence of two or more indicators could signal a risk to the pupil. It is important to note that the pupil may not yet be aware of the practice or that it may be conducted on them, so staff will be sensitive when broaching the subject.

Indicators that a pupil may be at heightened risk of undergoing FGM include:

- The socio-economic position of the family and their level of integration into UK society.
- The pupil coming from a community known to adopt FGM.
- Any girl with a mother or sister who has been subjected to FGM.
- Any girl withdrawn from PSHE.

Indicators that FGM may take place soon include:

- When a female family elder is visiting from a country of origin.
- A girl confiding that she is to have a 'special procedure' or a ceremony to 'become a woman'.
- A girl requesting help from a teacher if she is aware or suspects that she is at immediate risk.
- A girl, or her family member, talking about a long holiday to her country of origin or another country where FGM is prevalent.

All staff will be vigilant to the signs that FGM has already taken place so that help can be offered, enquiries can be made to protect others, and criminal investigations can begin. Indicators that FGM may have already taken place include the pupil:

- Having difficulty walking, sitting or standing.
- Spending longer than normal in the bathroom or toilet.
- Spending long periods of time away from a classroom during the day with bladder or menstrual problems.
- Having prolonged or repeated absences from school, followed by withdrawal or depression.
- Being reluctant to undergo normal medical examinations.
- Asking for help, but not being explicit about the problem due to embarrassment or fear.

FGM is included in the definition of **“honour-based’ abuse (HBA)”**, which involves crimes that have been committed to defend the honour of the family and/or community. All forms of HBA are forms of abuse and will be treated and escalated as such. Staff will be alert to the signs of HBA, including concerns that a child is at risk of HBA, or has already suffered from HBA, and will consult with the DSL who will activate local safeguarding procedures if concerns arise.

19. Forced marriage

For the purposes of this policy, a **“forced marriage”** is defined as a marriage that is entered into without the full and free consent of one or both parties, and where violence, threats or any other form of coercion is used to cause a person to enter into the marriage. Threats can be physical, emotional, or psychological. A lack of full and free consent can be where a person does not consent or where they cannot consent, e.g. due to some forms of SEND. Forced marriage is a crime in the UK and a form of HBA.

All staff will be alert to the indicators that a pupil is at risk of, or has undergone, forced marriage, including, but not limited to, the pupil:

- Becoming anxious, depressed and emotionally withdrawn with low self-esteem.
- Showing signs of mental health disorders and behaviours such as self-harm or anorexia.
- Displaying a sudden decline in their educational performance, aspirations or motivation.
- Regularly being absent from school.
- Displaying a decline in punctuality.
- An obvious family history of older siblings leaving education early and marrying early.

Staff who have any concerns regarding a pupil who may have undergone, is currently undergoing, or is at risk of forced marriage will speak to the DSL and local safeguarding procedures will be followed – this could include referral to CSCS, the police or the Forced Marriage Unit.

20. Radicalisation

For the purposes of this policy, **“extremism”** refers to the vocal or active opposition to fundamental British values, including democracy, the rule of law, individual liberty, and the mutual respect and tolerance of different faiths and beliefs. Extremism also includes calling for the death of members of the armed forces.

For the purposes of this policy, **“radicalisation”** refers to the process by which a person comes to support terrorism and extremist ideologies associated with terrorist groups.

For the purposes of this policy, **“terrorism”** refers to an action that endangers or causes serious violence to a person or people, serious damage to property, or seriously interferes with or disrupts an electronic system. The use or threat of these actions must be designed to influence the government or intimidate the public, and be made for the purpose of advancing a political, religious or ideological cause.

Protecting pupils from the risk of radicalisation is part of the school’s wider safeguarding duties. The school will actively assess the risk of pupils being radicalised and drawn into extremism and/or terrorism. Staff will be alert to changes in pupils’ behaviour which could indicate that they may need help or protection. Staff will use their professional judgement to identify pupils who may be at risk of radicalisation and act appropriately, which may include contacting the DSL or making a Prevent referral. The school will work with local safeguarding arrangements as appropriate.

The school will ensure that they engage with parents and families, as they are in a key position to spot signs of radicalisation. In doing so, the school will assist and advise family members who raise concerns and provide information for support mechanisms. Any concerns over radicalisation will be discussed with the pupil’s parents, unless the school has reason to believe that the child would be placed at risk as a result.

The DSL will undertake Prevent awareness training to be able to provide advice and support to other staff on how to protect pupils against the risk of radicalisation. The DSL will hold formal training sessions with all members of staff to ensure they are aware of the risk indicators and their duties regarding preventing radicalisation.

The Prevent duty

Under section 26 of the Counter-Terrorism and Security Act 2015, all schools are subject to a duty to have “due regard to the need to prevent people from being drawn into terrorism”, known as **“the Prevent duty”**. The Prevent duty will form part of the school’s wider safeguarding obligations.

The school’s procedures for carrying out the Prevent duty, including how it will engage and implement the Channel programme, are outline in the Prevent Duty Policy.

21. Pupils with family members in prison

Pupils with a family member in prison will be offered pastoral support as necessary. They will receive a copy of ‘[Are you a young person with a family member in prison?](#)’ from Action for Prisoners’ Families where appropriate and allowed the opportunity to discuss questions and concerns.

22. Pupils required to give evidence in court

Pupils required to give evidence in criminal courts, either for crimes committed against them or crimes they have witnessed, will be offered appropriate pastoral support.

Pupils will be provided with the booklet '[Going to Court](#)' from HMCTS where appropriate and allowed the opportunity to discuss questions and concerns.

23. Mental health

All staff will be made aware that mental health problems can, in some cases, be an indicator that a pupil has suffered, or is at risk of suffering, abuse, neglect or exploitation.

Staff will not attempt to make a diagnosis of mental health problems – the school will ensure this is done by a trained mental health professional. Staff will, however, be encouraged to identify pupils whose behaviour suggests they may be experiencing a mental health problem or may be at risk of developing one. Staff will also be aware of how pupils' experiences can impact on their mental health, behaviour, and education.

Staff who have a mental health concern about a pupil that is also a safeguarding concern will act in line with this policy and speak to the DSL or deputy DSL(s).

The school will access a range of advice to help them identify pupils in need of additional mental health support, including working with external agencies.

24. Peer-on-peer abuse

For the purposes of this policy, "**peer-on-peer abuse**" is defined as abuse between children.

The school has a zero-tolerance approach to abuse, including peer-on-peer abuse, as confirmed in the Child Protection and Safeguarding Policy's [statement of intent](#).

All staff will be aware that peer-on-peer abuse can occur between pupils of any age and gender, both inside and outside of school, as well as online. All staff will be aware of the indicators of peer-on-peer abuse, how to identify it, and how to respond to reports. All staff will also recognise that even if no cases have been reported, this is not an indicator that peer-on-peer abuse is not occurring. All staff will speak to the DSL if they have any concerns about peer-on-peer abuse.

All staff will understand the importance of challenge inappropriate behaviour between peers, and will not tolerate abuse as "banter" or "part of growing up".

Peer-on-peer abuse can be manifested in many different ways, including:

- Bullying, including cyberbullying and prejudice-based or discriminatory bullying.
- Abuse in intimate personal relationships between peers.
- Physical abuse – this may include an online element which facilitates, threatens and/or encourages physical abuse.
- Sexual violence – this may include an online element which facilitates, threatens and/or encourages sexual violence.

- Sexual harassment, including online sexual harassment, which may be standalone or part of a broader pattern of abuse.
- Causing someone to engage in sexual activity without consent.
- The consensual and non-consensual sharing of nude and semi-nude images and/or videos.
- Upskirting.
- Initiation- and hazing-type violence and rituals, which can include activities involving harassment, abuse or humiliation used as a way of initiating a person into a group, and may also include an online element.

All staff will be clear as to the school's policy and procedures regarding peer-on-peer abuse and the role they have to play in preventing it and responding where they believe a child may be at risk from it.

All staff will be made aware of the heightened vulnerability of pupils with SEND, who evidence suggests are more likely to be abused than their peers. Staff will not assume that possible indicators of abuse relate to the pupil's SEND and will always explore indicators further.

All staff will be made aware of the heightened vulnerability of LGBTQ+ pupils, who evidence suggests are also more likely to be targeted by their peers. In some cases, pupils who are perceived to be LGBTQ+, regardless of whether they are LGBTQ+, can be just as vulnerable to abuse as LGBTQ+ pupils. The school's response to sexual violence and sexual harassment between pupils of the same sex will be equally as robust as it is for incidents between children of the opposite sex.

Pupils will be made aware of how to raise concerns or make a report and how any reports will be handled. This includes the process for reporting concerns about friends or peers. Pupils will also be reassured that they will be taken seriously, be supported, and kept safe.

The school's procedures for managing allegations of peer-on-peer abuse are outlined in the Peer-on-Peer Abuse Policy. Staff will follow these procedures, as well as the procedures outlined in the school's Anti-Bullying Policy and Exclusion Policy, where relevant.

25. Serious violence

Through training, all staff will be made aware of the indicators which may signal a pupil is at risk from, or is involved with, serious violent crime. These indicators include, but are not limited to:

- Increased absence from school.
- A change in friendships.
- Relationships with older individuals or groups.
- A significant decline in academic performance.
- Signs of self-harm.
- A significant change in wellbeing.
- Signs of assault.
- Unexplained injuries.
- Unexplained gifts or new possessions.

Staff will be made aware of some of the most significant risk factors that could increase a pupil's vulnerability to becoming involved in serious violence. These risk factors include, but are not limited to:

- Being male.
- Having been frequently absent from school.
- Having been permanently excluded from school.
- Having experienced child maltreatment.
- Having been involved in offending, such as theft or robbery.

Staff members who suspect a pupil may be vulnerable to, or involved in, serious violent crime will immediately report their concerns to the DSL.

26. Online safety and personal electronic devices

The school will adhere to the Online Safety Policy at all times.

As part of a broad and balanced curriculum, all pupils will be made aware of online risks and taught how to stay safe online.

Through training, all staff members will be made aware of:

- Pupil attitudes and behaviours which may indicate they are at risk of potential harm online.
- The procedure to follow when they have a concern regarding a pupil's online activity.

The school will ensure that suitable filtering systems are in place on ICT equipment to prevent children accessing inappropriate material, in accordance with the school's Data and Cyber-security Breach Prevention and Management Plan. The school will, however, ensure that the use of filtering and monitoring systems does not cause "over blocking", which may lead to unreasonable restrictions as to what pupils can be taught online.

Further information regarding the school's approach to online safety can be found in the Online Safety Policy.

27. Reviewing online safety

The school will carry out an annual review of its approach to online safety, supported by an annual risk assessment that considers and reflects the risks faced by pupils.

28. Personal electronic devices

The use of personal electronic devices, including mobile phones and cameras, by staff and pupils is closely monitored by the school, in accordance with the Personal Electronic Devices Policy.

Photographs and videos of pupils will be carefully planned before any activity with particular regard to consent and adhering to the school's Data Protection Policy and Photography Policy. The DPO will oversee the planning of any events where photographs and videos will be taken.

Where photographs and videos will involve pupils who are LAC, adopted pupils, or pupils for whom there are security concerns, the headteacher will liaise with the DSL to determine the steps involved.

The DSL will, in known cases of pupils who are LAC or who have been adopted, liaise with the pupils' social workers, carers or adoptive parents to assess the needs and risks associated with the pupils.

Staff will report any concerns about pupils' or other staff members' use of personal electronic devices to the DSL, following the appropriate procedures.

29. Upskirting

Under the Voyeurism (Offences) Act 2019, it is an offence to operate equipment for the purpose of upskirting. **"Operating equipment"** includes enabling, or securing, activation by another person without that person's knowledge, e.g. a motion-activated camera.

Upskirting will not be tolerated by the school. Any incidents of upskirting will be reported to the DSL, who will then decide on the next steps to take, which may include police involvement.

30. Sexting and the sharing of indecent images

The school will ensure that staff are aware to treat the sharing of indecent images, including through sexting, as a safeguarding concern.

Staff will receive appropriate training regarding child sexual development and will understand the difference between sexual behaviour that is considered normal and expected for the age of the pupil, and sexual behaviour that is inappropriate and harmful. Staff will receive appropriate training around how to deal with instances of sexting in the school community, including understanding motivations, assessing risks posed to pupils depicted in the images, and how and when to report instances of sexting.

Staff will be aware that creating, possessing, and distributing indecent imagery of children is a criminal offence, regardless of whether the imagery is created, possessed, and distributed by the individual depicted; however, staff will ensure that pupils are not unnecessarily criminalised.

Where a member of staff becomes aware of an incidence of sexting that involves indecent images of a pupil, they will refer this to the DSL as soon as possible. Where a pupil confides in a staff member about the circulation of indecent imagery, depicting them or someone else, the staff member will:

- Refrain from viewing, copy, printing, sharing, storing or saving the imagery.
- Tell the DSL immediately if they accidentally view an indecent image and seek support.
- Explain to the pupil that the incident will need to be reported.
- Respond positively to the pupil without blaming or shaming anyone involved, and reassuring them that they can receive support from the DSL.
- Report the incident to the DSL.

The DSL will attempt to understand what the image contains **without viewing it** and the context surrounding its creation and distribution – they will categorise the incident into one of two categories:

- **Aggravated:** incidents which involve additional or abusive elements beyond the creation and distribution of indecent images of pupils, including where there is an adult involved, where there is an intent to harm the pupil depicted, or where the images are used recklessly.

- **Experimental:** incidents involving the creation and distribution of indecent images of pupils where there is no adult involvement or apparent intent to cause harm or embarrassment to the pupil.

For there to be a good and clear reason to view imagery, the DSL would need to be satisfied that this action is:

- The only way to make a decision about whether to involve other agencies because it is not possible to establish the facts, e.g. the contents of the imagery, from the pupil(s) involved.
- Necessary to report it to a website, app or suitable reporting agency to have the image taken down, or to support the pupil or their parent in making a report.
- Unavoidable because the pupil has presented the image directly to a staff member or the image has been found on a school device or your school's network.

Where it is necessary to view the imagery, e.g. if this is the only way to make a decision about whether to inform other agencies, the DSL should:

- Never copy, print, share, store or save them as this is illegal – if this has already happened, contact the local police for advice and to explain the circumstances.
- Discuss the decision with the headteacher or a member of the SLT.
- Make sure viewing is undertaken by the DSL (or equivalent) or another member of the safeguarding team with delegated authority from the headteacher or a member of the SLT.
- Make sure viewing takes place with another member of staff present in the room, ideally the headteacher or a member of the SLT. This staff member does not need to view the images.
- Wherever possible, make sure viewing takes place on the school premises, ideally in the headteacher's office or a member of the SLT's office.
- Make sure, wherever possible, that they are viewed by a staff member of the same sex as the pupil in the images.
- Record how and why the decision was made to view the imagery in the safeguarding or child protection records, including who was present, why the nudes or semi-nudes were viewed and any subsequent actions.

Where the incident is categorised as 'aggravated', the situation will be managed in line with the school's Peer-on-Peer Abuse Policy. Where the incident is categorised as 'experimental', the pupils involved are supported to understand the implications of sharing indecent imagery and to move forward from the incident. Where there is reason to believe that indecent imagery being circulated will cause harm to a pupil, the DSL escalates the incident to CSCS. Where indecent imagery of a pupil has been shared publicly, the DSL will work with the pupil to report imagery to sites on which it has been shared and will reassure them of the support available.

31. Context of safeguarding incidents

Safeguarding incidents can occur outside of school and can be associated with outside factors. All staff, particularly the DSL and deputy DSL(s), will always consider the context of safeguarding incidents. Assessment of pupils' behaviour will consider whether there are wider environmental factors that are a threat to their safety and/or welfare. The school will provide as much contextual information as possible when making referrals to CSCS.

32. Pupils potentially at greater risk of harm

The school recognises that some groups of pupils can face additional safeguarding challenges, and understands that further barriers may exist when determining abuse and neglect in these groups of pupils. Additional considerations for managing safeguarding concerns and incidents amongst these groups are outline below.

33. Pupils who need social workers

Pupils may need social workers due to safeguarding or welfare needs. These needs can leave pupils vulnerable to further harm and educational disadvantage.

As a matter of routine, the DSL will hold and use information from the LA about whether a pupil has a social worker in order to make decisions in the best interests of the pupil's safety, welfare, and educational outcomes.

Where a pupil needs a social worker, this will inform decisions about safeguarding, e.g. responding to unauthorised absence, and promoting welfare, e.g. considering the provision pastoral or academic support.

34. Home-educated children

Parents may choose elective home education (EHE) for their children. In some cases, EHE can mean that children are less visible to the services needed to safeguard and support them.

In line with the Education (Pupil Registration) (England) Regulations 2006, the school will inform the LA of all deletions from the admissions register when a pupil is taken off roll.

Where a parent has expressed their intention to remove a pupil from school for EHE, the school, in collaboration with the LA and other key professionals, will coordinate a meeting with the parent, where possible, before the final decision has been made, particularly if the pupil has SEND, is vulnerable, and/or has a social worker.

35. LAC and PLAC

Children most commonly become looked after because of abuse and/or neglect. Because of this, they can be at potentially greater risk in relation to safeguarding. PLAC, also known as care leavers, can also remain vulnerable after leaving care.

The trust board will ensure that staff have the skills, knowledge and understanding to keep LAC and PLAC safe. This includes ensuring that the appropriate staff have the information they need, such as:

- Looked after legal status, i.e. whether they are looked after under voluntary arrangements with consent of parents, or on an interim or full care order.
- Contact arrangements with parents or those with parental responsibility.
- Care arrangements and the levels of authority delegated to the carer by the authority looking after the pupil.

The DSL will be provided with the necessary details of pupils' social workers and the VSH, and, for PLAC, personal advisers.

Further details of safeguarding procedures for LAC and PLAC are outlined in the school's LAC Policy.

36. Pupils with SEND

When managing safeguarding in relation to pupils with SEND, staff will be aware of the following:

- Certain indicators of abuse, such as behaviour, mood and injury, may relate to the pupil's disability without further exploration; however, it should never be assumed that a pupil's indicators relate only to their disability
- Pupils with SEND can be disproportionately impacted by issues such as bullying, without outwardly showing any signs
- Communication barriers may exist, as well as difficulties in overcoming these barriers

When reporting concerns or making referrals for pupils with SEND, the above factors will always be taken into consideration. When managing a safeguarding issue relating to a pupil with SEND, the DSL will liaise with the school's SENCO, as well as the pupil's parents where appropriate, to ensure that the pupil's needs are met effectively.

37. Use of the school premises for non-school activities

Where the trust board hires or rents out school facilities or the school premises to organisations or individuals, e.g. for providers to run community or extracurricular activities, it will ensure that appropriate arrangements are in place to keep pupils safe.

Where the trust board provides the activities under the direct supervision or management of school staff, child protection arrangements will apply. Where activities are provided separately by another body, this may not be the case; therefore, the trust board will seek assurance that the body concerned has appropriate safeguarding and child protection policies and procedures in place, including inspecting these as needed. The trust board will also ensure that there are arrangements in place to liaise with the school on these matters where appropriate. The trust board will ensure safeguarding requirements are included in any transfer of control agreement, i.e. a lease or hire agreement, as a condition of use and occupation of the premises, and specify that failure to comply with this would lead to termination of the agreement.

38. Extracurricular activities and clubs

Extra-curricular activities and clubs hosted by external bodies, e.g. charities or companies, will work in collaboration with the school to effectively safeguard pupils and adhere to local safeguarding arrangements.

Staff and volunteers running extracurricular activities and clubs are aware of their safeguarding responsibilities and promote the welfare of pupils. Paid and volunteer staff understand how they should respond to child protection concerns and how to make a referral to CSCS or the police, if necessary.

All national governing bodies of sport that receive funding from either Sport England or UK Sport must aim to meet the Standards for Safeguarding and Protecting Children in Sport.

39. Alternative provision

The school will remain responsible for a pupil's welfare during their time at an alternative provider. When placing a pupil with an alternative provider, the school will obtain written confirmation that the provider has conducted all relevant safeguarding checks on staff.

40. Work experience

When a pupil is sent on work experience, the school will ensure that the provider has appropriate safeguarding policies and procedures in place. Where the school has pupils conduct work experience at the school, an enhanced DBS check will be obtained if the pupil is over the age of 16.

41. Homestay exchange visits/School-arranged homestays in UK

Where the school is arranging for a visiting child to be provided with care and accommodation in the UK in the home of a family to which the child is not related, the responsible adults are considered to be in regulated activity for the period of the stay. In such cases, the school is the regulated activity provider; therefore, the school will obtain all the necessary information required, including a DBS enhanced certificate with barred list information, to inform its assessment of the suitability of the responsible adults.

Where criminal record information is disclosed, the school will consider, alongside all other information, whether the adult is a suitable host. In addition to the responsible adults, the school will consider whether a DBS enhanced certificate should be obtained for anyone else aged over 16 in the household.

42. School-arranged homestays abroad

The school will liaise with partner schools to discuss and agree the arrangements in place for the visit. The school will consider, on a case-by-case basis, whether to contact the relevant foreign embassy or High Commission of the country in question to ascertain what checks may be possible in respect of those providing homestay outside of the UK. The school will use its professional judgement to assess whether the arrangements are appropriate and sufficient to safeguard every child involved in the exchange. Pupils will be provided with emergency contact details to use where an emergency occurs or a situation arises that makes them feel uncomfortable.

43. Privately arranged homestays

Where a parent or pupil arranges their own homestay, this is a private arrangement and the school is not the regulated activity provider.

44. Private fostering

Where a period of UK homestay lasts 28 days or more for a child aged under 16, or under 18 for a child with SEND, this may amount to private fostering under the Children Act 1989. Where the school becomes aware of a pupil being privately fostered, they will notify the LA as soon as possible to allow the LA to conduct any necessary checks.

45. Concerns about pupils

If a member of staff has any concern about a pupil's welfare, they will act on them immediately by speaking to the DSL or deputy DSL(s). All staff members are aware of the procedure for reporting concerns and understand their responsibilities in relation to confidentiality and information sharing, as outlined in the [communication and confidentiality](#) section of this policy.

Where the DSL is not available to discuss the concern with, staff members will contact the deputy DSL(s) with the matter. If a referral is made about a pupil by anyone other than the DSL, the DSL will be informed as soon as possible.

The LA will make a decision regarding what action is required within one working day of the referral being made and will notify the referrer. Staff are required to monitor a referral if they do not receive information from the LA regarding what action is necessary for the pupil. If the situation does not improve after a referral, the DSL will ask for reconsideration to ensure that their concerns have been addressed and that the situation improves for the pupil.

If early help is appropriate, the case will be kept under constant review. If the pupil's situation does not improve, a referral will be considered. All concerns, discussions and decisions made, as well as the reasons for making those decisions, will be recorded in writing by the DSL and kept securely in location.

If a pupil is in immediate danger, a referral will be made to CSCS and/or the police immediately. If a pupil has committed a crime, such as sexual violence, the police will be notified without delay.

Where there are safeguarding concerns, the school will ensure that the pupil's wishes are always taken into account, and that there are systems available for pupils to provide feedback and express their views. When responding to safeguarding concerns, staff members will act calmly and supportively, ensuring that the pupil is listened to and believed.

An inter-agency assessment will be undertaken where a child and their family could benefit from coordinated support from more than one agency. These assessments will identify what help the child and family require in preventing needs escalating to a point where intervention would be needed.

46. Managing referrals

The reporting and referral process outlined in [Appendix B](#) will be followed accordingly.

All staff members, in particular the DSL, will be aware of the LA's arrangements in place for managing referrals. The DSL will provide staff members with clarity and support where needed. When making a referral to CSCS or other external agencies, information will be shared in line with confidentiality requirements and will only be shared where necessary to do so.

The DSL will work alongside external agencies, maintaining continuous liaison, including multi-agency liaison where appropriate, in order to ensure the wellbeing of the pupils involved. The DSL will work closely with the police to ensure the school does not jeopardise any criminal proceedings, and to obtain help and support as necessary.

Where a pupil has been harmed or is in immediate danger or at risk of harm, the referrer will be notified of the action that will be taken within one working day of a referral being made. Where this information is not forthcoming, the referrer will contact the assigned social worker for more information.

The school will not wait for the start or outcome of an investigation before protecting the victim and other pupils: this applies to criminal investigations as well as those made by CSCS. Where CSCS decide that a statutory investigation is not appropriate, the school will consider referring the incident again if it is believed that the pupil is at risk of harm. Where CSCS decide that a statutory investigation is not appropriate and the school agrees with this decision, the school will consider the use of other support mechanisms, such as early help and pastoral support.

At all stages of the reporting and referral process, the pupil will be informed of the decisions made, actions taken and reasons for doing so. Discussions of concerns with parents will only take place where this would not put the pupil or others at potential risk of harm. The school will work closely with parents to ensure that the pupil, as well as their family, understands the arrangements in place, such as in-school interventions, is effectively supported, and knows where they can access additional support.

47. Concerns about staff and safeguarding practices

If a staff member has concerns about another member of staff (including supply staff and volunteers), it will be raised with the headteacher. If the concern is with regards to the headteacher, it will be referred to the chief executive headteacher.

Any concerns regarding the safeguarding practices at the school will be raised with the SLT, and the necessary whistleblowing procedures will be followed, as outlined in the Whistleblowing Policy. If a staff member feels unable to raise an issue with the SLT, they should access other whistleblowing channels such as the NSPCC whistleblowing helpline (0800 028 0285).

48. Allegations of abuse against staff

All allegations against staff, supply staff, volunteers and contractors will be managed in line with the school's Allegations of Abuse Against Staff Policy – a copy of which will be provided to, and understood by, all staff. The school will ensure all allegations against staff, including those who are not employees of the school, are dealt with appropriately and that the school liaises with the relevant parties.

When managing allegations against staff, the school will recognise the distinction between allegations that meet the harms threshold and allegations that do not, also known as “low-level concerns”, as defined in the Allegations of Abuse Against Staff Policy. Allegations that meet the harms threshold include instances where staff have:

- Behaved in a way that has harmed a child, or may have harmed a child.
- Committed or possibly committed a criminal offence against or related to a child.
- Behaved towards a child in a way that indicates they may pose a risk of harm to children.
- Behaved, or may have behaved, in a way that indicates they may not be suitable to work with children.

49. Communication and confidentiality

All child protection and safeguarding concerns will be treated in the strictest of confidence in accordance with school data protection policies.

Where there is an allegation or incident of sexual abuse or sexual violence, the victim is entitled to anonymity by law; therefore, the school will consult its policy and agree on what information will be disclosed to staff and others, in particular the alleged perpetrator and their parents. Where a report of sexual violence or sexual harassment is progressing through the criminal justice system, the school will do all it can to protect the anonymity of the pupils involved in the case.

Concerns will only be reported to those necessary for its progression and reports will only be shared amongst staff members and with external agencies on a need-to-know basis. During the disclosure of a concern by a pupil, staff members will not promise the pupil confidentiality and will ensure that they are aware of what information will be shared, with whom and why.

Where it is in the public interest, and protects pupils from harm, information can be lawfully shared without the victim's consent, e.g. if doing so would assist the prevention, detection or prosecution of a serious crime. Before doing so, the DSL will weigh the victim's wishes against their duty to protect the victim and others. Where a referral is made against the victim's wishes, it is done so carefully with the reasons for the referral explained to the victim and specialist support offered.

Depending on the nature of a concern, the DSL will discuss the concern with the parents of the pupils involved. Discussions with parents will not take place where they could potentially put a pupil at risk of harm. Discussion with the victim's parents will relate to the arrangements being put in place to safeguard the victim, with the aim of understanding their wishes in terms of support arrangements and the progression of the report. Discussion with the alleged perpetrator's parents will have regards to the arrangements that will impact their child, such as moving classes, with the reasons behind decisions being explained and the available support discussed. External agencies will be invited to these discussions where necessary.

Where confidentiality or anonymity has been breached, the school will implement the appropriate disciplinary procedures as necessary and will analyse how damage can be minimised and future breaches be prevented.

Where a pupil is leaving the school, the DSL will consider whether it is appropriate to share any information with the pupil's new provider, in addition to the child protection file, that will allow the new provider to support the pupil and arrange appropriate support for their arrival.

50. Safer recruitment

The school's full policy and procedures for safer recruitment are outlined in the Safer Recruitment Policy.

An enhanced DBS check with barred list information will be undertaken for all staff members engaged in regulated activity. A person will be considered to be in 'regulated activity' if, as a result of their work, they:

- Are responsible on a daily basis for the care or supervision of children.
- Regularly work in the school at times when children are on the premises.

- Regularly come into contact with children under 18 years of age.

The DfE's [DBS Workforce Guides](#) will be consulted when determining whether a position fits the child workforce criteria.

The governing board will adhere to statutory responsibilities by conducting the appropriate pre-employment checks for all prospective employees, including internal candidates and candidates who have lived or worked outside the UK.

The appropriate DBS and suitability checks will be carried out for all trustees, members, volunteers, and contractors.

51. Staff suitability

All centres providing care for pupils under the age of eight must ensure that staff and volunteers working in these settings are not disqualified from doing so under the Childcare (Disqualification) and Childcare (Early Years Provision Free of Charge) (Extended Entitlement) (Amendment) Regulations 2018. A person may be disqualified if they:

- Have certain orders or other restrictions placed upon them.
- Have committed certain offences.

All staff members are required to sign the [declaration form](#) provided in the appendices of this policy confirming that they are not disqualified from working in a schooling environment. A disqualified person will not be permitted to continue working at the school, unless they apply for and are granted a waiver from Ofsted. The school will provide support with this process.

52. Ongoing suitability

Following appointment, consideration will be given to staff and volunteers' ongoing suitability – to prevent the opportunity for harm to children or placing children at risk.

53. Referral to the DBS

The school will refer to the DBS anyone who has harmed a child or poses a risk of harm to a child, or if there is reason to believe the member of staff has committed an offence and has been removed from working in regulated activity. The duty will also apply in circumstances where an individual is deployed to another area of work that is not in regulated activity or they are suspended.

54. Single central record (SCR)

The school keeps an SCR which records all staff, including agency and third-party supply staff, and teacher trainees on salaried routes, who work at the school.

The following information is recorded on the SCR:

- An identity check
- A barred list check
- An enhanced DBS check
- A prohibition from teaching check

- A check of professional qualifications, where required
- A check to determine the individual's right to work in the UK
- Additional checks for those who have lived or worked outside of the UK
- A section 128 check for those in management positions

For agency and third-party supply staff, the school will also record whether written confirmation from the employment business supplying the member of staff has been received which indicates that all the necessary checks have been conducted and the date that confirmation was received.

If any checks have been conducted for volunteers, this will also be recorded on the SCR. If risk assessments are conducted to assess whether a volunteer should be subject to an enhanced DBS check, the risk assessment will be recorded.

Written confirmation that supply agencies have completed all relevant checks will also be included.

The school is free to record any other information it deems relevant.

The details of an individual will be removed from the SCR once they no longer work at the school.

55. Training

Staff members will undergo safeguarding and child protection training at induction, which will be updated on a termly basis and/or whenever there is a change in legislation.

The induction training will cover:

- The Child Protection and Safeguarding Policy.
- The Peer-on-Peer Abuse Policy and procedures.
- The Staff Code of Conduct.
- Part one of 'Keeping children safe in education' (KCSIE) (or Annex A, if appropriate).
- The Behavioural Policy.
- The Children Missing Education Policy, including the safeguarding response to children who go missing from education.
- Appropriate child protection and safeguarding training, including online safety training.
- Information about the role and identity of the DSL and deputy DSL(s).

All staff members will also receive regular safeguarding and child protection updates as required, but at least annually. Training will cover, at a minimum:

- The issues surrounding sexual violence and sexual harassment.
- Contextual safeguarding.
- How to keep LAC and PLAC safe.
- CCE and the need to refer cases to the National Referral Mechanism.
- Updated online safety training.

Staff will receive opportunities to contribute towards and inform the safeguarding arrangements in the school.

The DSL and deputy DSL(s) will undergo child protection and safeguarding training, and update this training at least every two years. The DSL and deputy DSL(s) will also obtain access to resources and

attend any relevant or refresher training courses, ensuring they keep up-to-date with any developments relevant to their role. This will include training to understand:

- The assessment process for providing early help and statutory intervention, including local criteria for action and CSCS referral arrangements.
- How LAs conduct child protection case conferences and a child protection review conferences, to enable the DSL to attend and contribute to these effectively when required.
- The importance of providing information and support to CSCS.
- The lasting impact that adversity and trauma can have.
- How to be alert to the specific needs of children in need, pupils with SEND and/or relevant health conditions, and young carers.
- The importance of internal and external information sharing.
- The Prevent duty.
- The risks associated with online safety, including the additional risks faced online by pupils with SEND.

56. Monitoring and review

This policy is reviewed at least annually by the DSL and trustees. This policy will be updated as needed to ensure it is up-to-date with safeguarding issues as they emerge and evolve, including any lessons learnt.

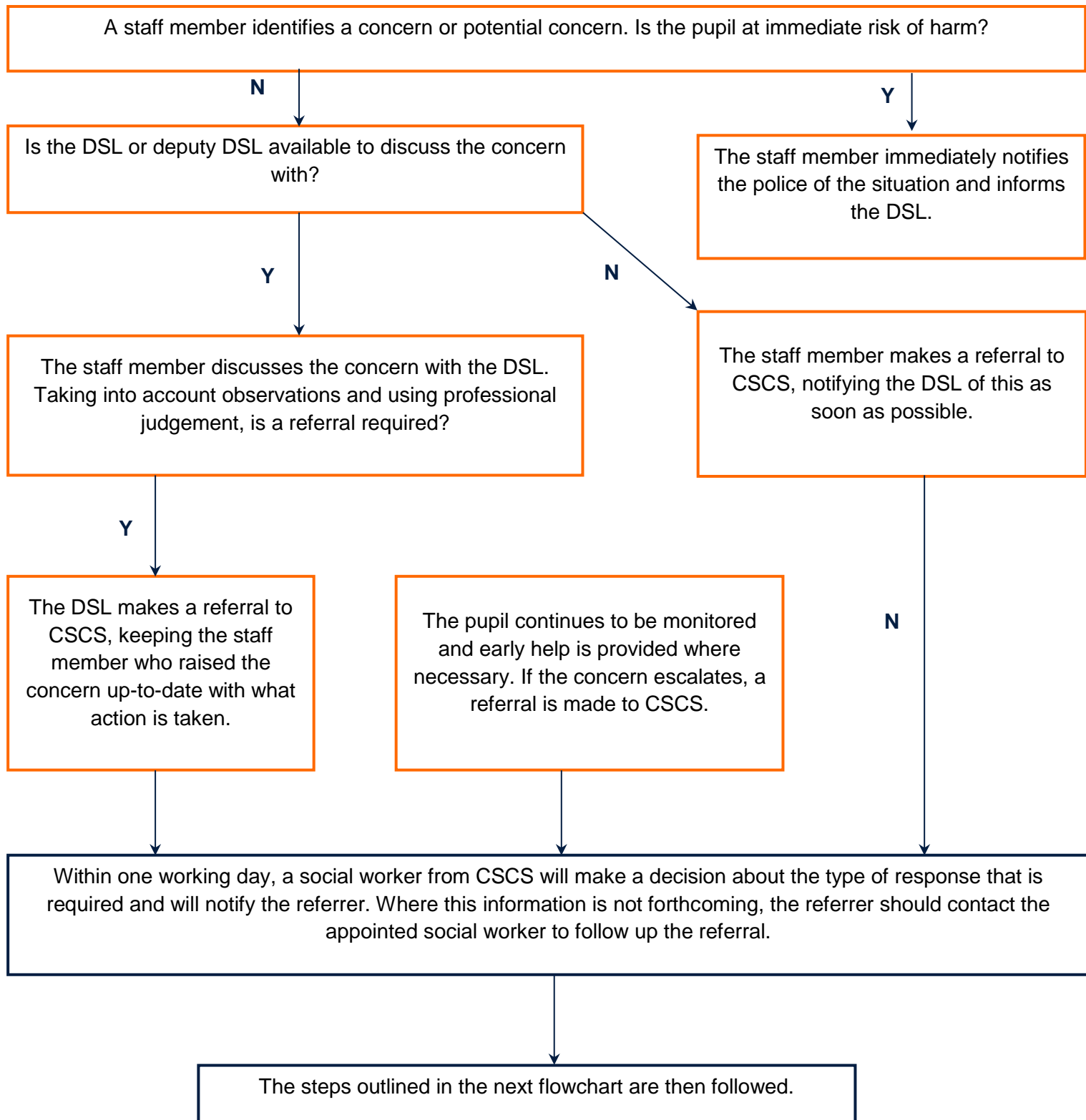
Any changes made to this policy will be communicated to all members of staff. All members of staff are required to familiarise themselves with all processes and procedures outlined in this policy as part of their induction programme. The next scheduled review date for this policy is August 2022.

Safeguarding Reporting Process

The process outlined within the first section should be followed where a staff member has a safeguarding concern about a child. Where a referral has been made, the process outlined in the 'After a referral is made' section should be followed.

The actions taken by the school are outlined in yellow, whereas actions taken by another agency are outlined in blue.

Before a referral is made



After a referral is made

Once a referral has been made, a social worker from CSCS will notify the referrer that a decision has been made and one of the following responses will be actioned.

The pupil is in need of immediate protection.

Where the pupil is at risk of significant harm but is not in immediate danger, a strategy discussion is held.

No formal assessment is needed.

Where appropriate to do so, the DSL and staff member who raised the concern may be consulted during these stages to ensure that all areas of concern are addressed.

Appropriate emergency action is taken by the social worker, police or NSPCC.

A Child in Need assessment is completed within 45 working days.

The DSL supports the initial staff member to liaise with other agencies to arrange an early help assessment and appropriate support.

Within 15 working days of the strategy discussion, an initial child protection conference is held.

A child protection plan is potentially required.

The type of support needed is identified, arranged through multi-agency liaison and provided effectively.

Staff keep the pupil's circumstances under review and re-refer if appropriate to ensure circumstances improve – the pupil's best interests always come first.

If the child's situation does not appear to be improving, the DSL should press for re-consideration to ensure their concerns have been addressed and, most importantly, that the child's situation improves.

- **Appendix A**
-
- **Responsibilities of the Designated Safeguarding Lead**

Roles and Responsibilities

All adults working with, or on behalf of children, have a responsibility to protect them. There are, however, key people within schools and the Local Authority who have specific responsibilities under child protection procedures.

The Designated Lead for child protection is Mr J Duke (Headteacher).

The Deputy Designated Leads are Mrs T Asghar (Assistant Head), Mrs D Walton (Assistant Head) and Miss D Sagar (Assistant Head).

A. DSL Job Description (See job Description)

The Designated Safeguarding Lead is key to ensuring that proper procedures and policies are in place and are followed with regard to child safeguarding issues. The Designated Safeguarding Lead should ensure the relevant people are informed including the class teacher where appropriate who may monitor the situation. They will also act as a dedicated resource available for other staff, volunteers and governors to draw upon.

The school recognises that the Designated Safeguarding Lead must have the status and authority within the school management structure to carry out the duties of the post – they must therefore be a member of the senior management team. All members of staff (including volunteers) must be made aware of who this person is and what their role is.

The Designated Safeguarding Lead will act as a source of advice and coordinate action within the school over child protection cases. They will need to liaise with other agencies and build good working relationships with colleagues from these agencies. The Designated Safeguarding Lead is the first person to whom members of staff report concerns. The Designated Safeguarding Lead is responsible for referring cases of suspected abuse or allegations to the relevant investigating agencies according to the procedures established by the LA.

N.B. The Designated Safeguarding Lead is not responsible for dealing with allegations made against members of staff. This remains the responsibility of the Head Teacher unless the allegation is about the Head Teacher then the Chief Executive Head Teacher must assume the responsibility. If any allegations are made against staff members, the Head Teacher would contact the LADO and follow the LA guidance.

To be effective they will:

- Act as a source of advice, support and expertise within the school and be responsible for coordinating action regarding referrals by liaising with Children's Services and other relevant agencies over suspicions that a child may be suffering harm.
- Cascade safeguarding advice and guidance issued by the LA.
- Where they have concerns that a referral has not been dealt with in accordance with the child protection procedures, they will ask the Local Authority Designated Officer to investigate further.
- Ensure each member of staff and volunteers at the school, and regular visitors (such as Education Welfare Officers, trainee teachers and supply teachers) are aware of and can access readily, this policy as part of induction.
- Liaise with the Head Teacher to inform them of any issues and ongoing investigations and ensure there is always cover for the role.

- Ensure that this policy is updated and reviewed annually and work with the designated governor for child protection regarding this.
- Be able to keep detailed accurate secure written records of referrals/concerns, and ensure that these are held in a secure place.
- Ensure parents are aware of the child protection policy in order to alert them to the fact that the school may need to make referrals.
- Where children leave the school roll, ensure any child protection file is transferred to the new school as soon as possible, separately from the main file, and addressed to the designated person for child protection. These records will be handed over in person one Designated Safeguarding Lead to the other or if an out of area transfer is needed then they will be transferred via registered and recorded mail. The Designated lead would add details of the transfer and who received the documents onto their chronology. If the receiving school uses CPOMS the records will be sent electronically via an encrypted transfer.
- Where a child leaves and the new school is not known, ensure that the local authority is alerted so that the child's name can be included on the database for missing pupils.

The Designated Safeguarding Lead also has an important role in ensuring all staff and volunteers receive appropriate training. They should:

- Attend training in how to identify abuse and know when it is appropriate to refer a case.
- Have a working knowledge of how LA operates and the conduct of a child protection case conference and be able to attend and contribute to these when required.
- Attend any relevant or refresher training courses and then ensure that any new or key messages are passed to other staff, volunteers and governors.
- Make themselves (and any deputies) known to all staff, volunteers and governors (including new starters and supply teachers) and ensure those members of staff have had training in child protection.
- This should be relevant to their needs to enable them to identify and report any concerns to the designated teacher immediately.

Our named Designated Safeguarding Lead officer from our Senior Leadership Team with lead responsibility and management oversight and accountability for child protection is Mr J Duke, Headteacher.

The Designated Safeguarding Lead must ensure that all staff involved in direct case work of vulnerable children, where there are child protection concerns/issues, have access to regular safeguarding supervision.

Where the school has concerns about a child, the Designated Safeguarding Lead will act as a source of support, advice and expertise to staff on matters of safety and safeguarding, and when deciding whether to make a referral by liaising with relevant agencies.

The Designated Safeguarding Lead is responsible for referring all cases of suspected abuse to Children's Social Work Service Duty and Advice Team. Keeping Children Safe in Education (2021) dictates that anyone in the school setting can make a referral, however, wherever possible this should be done by appropriately trained designated safeguarding staff.

The Deputy Designated Safeguarding Lead will liaise with the Head Teacher to inform them of issues, especially ongoing enquiries under section 47 of the Children Act 1989 and police investigations.

The Designated Safeguarding Lead should ensure the school policies are known and used appropriately:

- Ensure the school's child protection policy is reviewed annually and the procedures and implementation are updated and reviewed regularly, working with the governing body regarding this.
- Ensure the child protection policy is on the school's website, available publicly and parents are aware of the fact that referrals about suspected abuse or neglect may be made and the role of the school in this.
- Link with the local authority, Safeguarding Support and BSCB to make sure staff are aware of training opportunities and the latest local policies on safeguarding.

The Designated Safeguarding Leads will undertake appropriate refresher training at least every two years.

DSL must understand the assessment process for providing early help and intervention, for example through locally agreed common and shared assessment processes such as early help assessments.

DSL must have a working knowledge of how local authorities conduct a child protection case conference and a child protection review conference and be able to attend and contribute to these effectively when required to do so.

DSL has a responsibility to ensure each member of staff and volunteer has access to and understands the school's child protection policy and procedures, (this is included as part of the induction process for all new staff and volunteers).

Appendix B

Job Description DESIGNATED TRUSTEE

The Trustees will ensure that the designated member of staff for child protection is given sufficient time to carry out his or her duties, including accessing training.

The Trustees will review safeguarding practices in the school on a regular basis, and no less than annually, to ensure that:

- The school is carrying out its duties to safeguard the welfare of children at the school;
- Members of staff and volunteers are aware of current practices in this matter, and that staff receive training where appropriate;
- Child protection is integrated with induction procedures for all new members of staff and volunteers
- The school follows the procedures agreed by LA Safeguarding Children Board, and any supplementary guidance issued by the Local Authority
- Only persons suitable to work with children shall be employed in the school, or work here in a voluntary capacity
- Where safeguarding concerns about a member of staff are substantiated, take appropriate disciplinary action

The board of trustees ensures our pupils are taught how to keep themselves safe (including online) through teaching and learning opportunities as part of a broad and balanced curriculum. From September 2021, our school will work in accordance with new government regulations which make the subjects of Relationships Education (for primary age pupils) and Relationships and Sex Education (for secondary age pupils) and Health Education (for all pupils in state-funded schools) mandatory.

Appendix C

Our role in the prevention of abuse

We will identify and provide opportunities for children to develop skills, concepts, attitudes and knowledge to promote their safety and well-being. Relevant issues will be addressed through the PSHE curriculum. For example, self-esteem, emotional literacy, assertiveness, power, what to do if someone is hurting you, relationships education, peer pressure, online safety, preventing radicalisation and anti-bullying.

Relevant issues will be addressed through other areas of the curriculum. For example, , English, History, Drama, Art, computing (online safety), assemblies and PSHE lessons. All children begin their school year focussing on online safety in computing lessons. We will offer appropriate support to individual children who have experienced abuse or who have abused others (children who abuse others will be responded to in a way that meets their needs as well as protecting others within the school community through a multi-agency risk assessment).

All relevant policies which address issues of power and potential harm, e.g. Anti-Bullying, Single Equalities Policy, Relationships (behaviour) will be linked to ensure a whole school approach. Our Child Protection and Safeguarding Policy cannot be separated from the general ethos of the school, which is committed to ensuring that children are treated with respect and dignity, feel safe, and are listened to.

Appendix D

Mental Health

All staff should also be aware that mental health problems can, in some cases, be an indicator that a child has suffered or is at risk of suffering abuse, neglect or exploitation.

Only appropriately trained professionals should attempt to make a diagnosis of a mental health problem. Staff however, are well placed to observe children day-to-day and identify those whose behaviour suggests that they may be experiencing a mental health problem or be at risk of developing one.

Where children have suffered abuse and neglect, or other potentially traumatic adverse childhood experiences, this can have a lasting impact throughout childhood, adolescence and into adulthood. It is key that staff are aware of how these children's experiences can impact on their mental health, behaviour and education.

If staff have a mental health concern about a child that is also a safeguarding concern, immediate action should be taken, following their child protection policy and speaking to the designated safeguarding lead or a deputy.

Children requiring mental health support

Schools and colleges have an important role to play in supporting the mental health and wellbeing of their pupils.

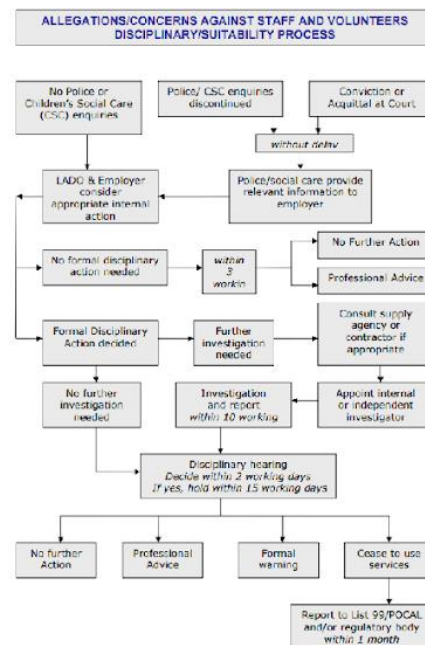
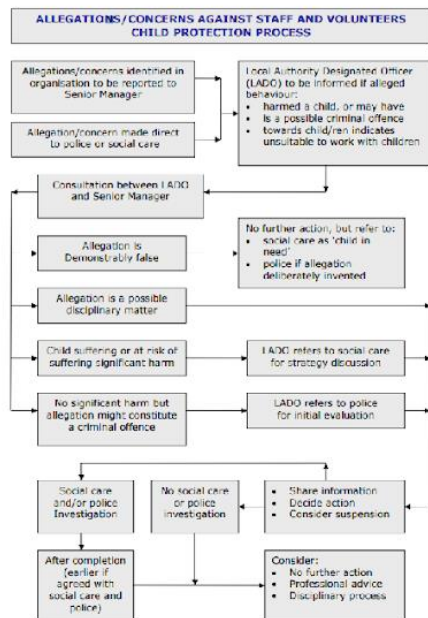
Mental health problems can, in some cases, be an indicator that a child has suffered or is at risk of suffering abuse, neglect or exploitation.

Schools and colleges can access a range of advice to help them identify children in need of extra mental health support, this includes working with external agencies. Public Health England has produced a range of resources to support secondary school teachers to promote positive health, wellbeing and resilience among young people.

Appendix E

Allegations against the Head of School

Any allegations against the Head Teacher will be referred to the CEO, Chair Of Trustees or the Local Authority Lead Officer (see flow chart).



Appendix F

Dealing with a disclosure of abuse

When a child tells me about abuse s/he has suffered, what must I remember?

- Stay calm
- Do not transmit shock, anger or embarrassment.
- Reassure the child. Tell her/him you are pleased that s/he is speaking to you.
- Never enter into a pact of secrecy with the child. Assure her/him that you will try to help but let the child know that you will have to tell other people in order to do this. State who this will be and why.
- Tell her/him that you believe them. Children very rarely lie about abuse; but s/he may have tried to tell others and not been heard or believed.
- Tell the child that it is not her/his fault.
- Encourage the child to talk but do not ask "leading questions" or press for information.
- Listen and remember.
- Check that you have understood correctly what the child is trying to tell you.
- Praise the child for telling you. Communicate that s/he has a right to be safe and protected.
- Do not tell the child that what s/he experienced is dirty, naughty or bad.
- It is inappropriate to make any comments about the alleged offender.
- Be aware that the child may retract what s/he has told you. It is essential to record all you have heard.
- At the end of the conversation, tell the child again who you are going to tell and why that person or those people need to know.
- As soon as you can afterwards, make a detailed record of the conversation using the child's own language on CPOMs. Include any questions you may have asked. Do not add any opinions or interpretations.

NB It is not the education staff's role to seek disclosures. Their role is to observe that something may be wrong, ask about it, listen, be available and try to make time to talk.

Immediately afterwards

Clear indications or disclosure of abuse must be reported to **Children's Social Work Service** without delay, by the Head teacher / Designated Safeguarding Lead/staff using the correct procedures as stated in the guidelines.

Appendix G

Child Protection Flow Chart

Child Protection Procedures Flow Chart September 2021

Designated Safeguarding Lead:	
Deputy Safeguarding Leads:	

On discovery or suspicion of child abuse If in doubt – ACT Immediately
You <u>MUST</u> inform your Designated or Deputy Safeguarding Lead in person. Do not use chats to inform.
<p>Where it is clear that a Child Protection Referral is needed contact Children's Initial Contact Point without delay</p> <ul style="list-style-type: none">• Children's Social Care Initial Contact Point - 01274 435600• Children's Social Care Emergency Duty Team - 01274 431010<ul style="list-style-type: none">• Early Help Gateway - 01274 432121 <p><u>IMMEDIATE RISK OF HARM CALL 999</u></p> <p>General enquiries, Children Specialist Services – 01274 435600</p> <p>Following a referral to Children's Social Care a Multi-Agency Referral Form (MARF) should be completed and sent to Children's Social Care. Consult the new Continuum of Need and Risk Identification document for help deciding what action should be taken about concerns about a child.</p> <p>Key documents and guidance can be found at the <u>Safer Bradford website</u></p>
If you are asked to monitor the situation, make sure you are clear what you are expected to monitor, for how long and how/and to whom you should give feedback information.
<p>If requested to by a DSL or DDSL record the incident on CPOMs.</p> <p>Remember to always make and keep a written record of all events, discussions, decisions, reasons for decisions and action taken. Keep records confidential and secure.</p>
<p>USEFUL TELEPHONE NUMBERS - <u>September 2021</u></p> <p>Children's Social Care Emergency Duty Team - 01274 431010</p> <p>Bradford Safeguarding Partnership - 01274 435600</p> <p>Education Social Work Service - 01274 439651</p> <p>LADO - 01274 437915</p> <p>Police Child and Public Protection Unit - 01274 376 061</p>

- **Appendix H**
- **Allegations of abuse made against staff**

Section 1: allegations that may meet the harms threshold

This section is based on 'Section 1: Allegations that may meet the harms threshold' in part 4 of Keeping Children Safe in Education.

This section applies to all cases in which it is alleged that a current member of staff, including a supply teacher, volunteer or contractor, has:

Behaved in a way that has harmed a child, or may have harmed a child, and/or

Possibly committed a criminal offence against or related to a child, and/or

Behaved towards a child or children in a way that indicates he or she may pose a risk of harm to children, and/or

Behaved or may have behaved in a way that indicates they may not be suitable to work with children – this includes behaviour taking place both inside and outside of school

We will deal with any allegation of abuse quickly, in a fair and consistent way that provides effective child protection while also supporting the individual who is the subject of the allegation.

A 'case manager' will lead any investigation. This will be the headteacher, or the chair of governors where the headteacher is the subject of the allegation. The case manager will be identified at the earliest opportunity.

Our procedures for dealing with allegations will be applied with common sense and judgement.

Suspension of the accused until the case is resolved

Suspension of the accused will not be the default position, and will only be considered in cases where there is reason to suspect that a child or other children is/are at risk of harm, or the case is so serious that there might be grounds for dismissal. In such cases, we will only suspend an individual if we have considered all other options available and there is no reasonable alternative.

Based on an assessment of risk, we will consider alternatives such as:

Redeployment within the school so that the individual does not have direct contact with the child or children concerned

Providing an assistant to be present when the individual has contact with children

Redeploying the individual to alternative work in the school so that they do not have unsupervised access to children

Moving the child or children to classes where they will not come into contact with the individual, making it clear that this is not a punishment and parents/carers have been consulted

Temporarily redeploying the individual to another role in a different location, for example to an alternative school or other work for the academy trust.

If in doubt, the case manager will seek views from the school's personnel adviser and the designated officer at the local authority, as well as the police and children's social care where they have been involved.

Definitions for outcomes of allegation investigations

Substantiated: there is sufficient evidence to prove the allegation

Malicious: there is sufficient evidence to disprove the allegation and there has been a deliberate act to deceive, or to cause harm to the subject of the allegation

False: there is sufficient evidence to disprove the allegation

Unsubstantiated: there is insufficient evidence to either prove or disprove the allegation (this does not imply guilt or innocence)

Unfounded: to reflect cases where there is no evidence or proper basis which supports the allegation being made

Procedure for dealing with allegations

In the event of an allegation that meets the criteria above, the case manager will take the following steps:

Conduct basic enquiries in line with local procedures to establish the facts to help determine whether there is any foundation to the allegation before carrying on with the steps below

Discuss the allegation with the designated officer at the local authority. This is to consider the nature, content and context of the allegation and agree a course of action, including whether further enquiries are necessary to enable a decision on how to proceed, and whether it is necessary to involve the police and/or children's social care services. (The case manager may, on occasion, consider it necessary to involve the police *before* consulting the designated officer – for example, if the accused individual is deemed to be an immediate risk to children or there is evidence of a possible criminal offence. In such cases, the case manager will notify the designated officer as soon as practicably possible after contacting the police)

Inform the accused individual of the concerns or allegations and likely course of action as soon as possible after speaking to the designated officer (and the police or children's social care services, where necessary). Where the police and/or children's social care services are involved, the case manager will only share such information with the individual as has been agreed with those agencies

Where appropriate (in the circumstances described above), carefully consider whether suspension of the individual from contact with children at the school is justified or whether alternative arrangements such as those outlined above can be put in place. Advice will be sought from the designated officer, police and/or children's social care services, as appropriate

Where the case manager is concerned about the welfare of other children in the community or the individual's family, they will discuss these concerns with the DSL and make a risk assessment of the situation. If necessary, the DSL may make a referral to children's social care

If immediate suspension is considered necessary, agree and record the rationale for this with the designated officer. The record will include information about the alternatives to suspension that have been considered, and why they were rejected. Written confirmation of the suspension will be provided to the individual facing the allegation or concern within 1 working day, and the individual will be given a named contact at the school and their contact details

If it is decided that no further action is to be taken in regard to the subject of the allegation or concern, record this decision and the justification for it and agree with the designated officer what information should be put in writing to the individual and by whom, as well as what action should follow both in respect of the individual and those who made the initial allegation

If it is decided that further action is needed, take steps as agreed with the designated officer to initiate the appropriate action in school and/or liaise with the police and/or children's social care services as appropriate

Provide effective support for the individual facing the allegation or concern, including appointing a named representative to keep them informed of the progress of the case and considering what other support is appropriate. Trade union representatives, or a colleague, can be called on for advice.– If requested the school or trust will investigate providing welfare counselling or medical advice]

Inform the parents or carers of the child/children involved about the allegation as soon as possible if they do not already know (following agreement with children's social care services and/or the police, if applicable). The case manager will also inform the parents or carers of the requirement to maintain confidentiality about any allegations made against teachers (where this applies) while investigations are ongoing. Any parent or carer who wishes to have the confidentiality restrictions removed in respect of a teacher will be advised to seek legal advice

Keep the parents or carers of the child/children involved informed of the progress of the case (only in relation to their child – no information will be shared regarding the staff member)

Make a referral to the DBS where it is thought that the individual facing the allegation or concern has engaged in conduct that harmed or is likely to harm a child, or if the individual otherwise poses a risk of harm to a child

We will inform Ofsted of any allegations of serious harm or abuse by any person living, working, or looking after children at the premises (whether the allegations relate to harm or abuse committed on the premises or elsewhere), and any action taken in respect of the allegations. This notification will be made as soon as reasonably possible and always within 14 days of the allegations being made.

If the school is made aware that the secretary of state has made an interim prohibition order in respect of an individual, we will immediately suspend that individual from teaching, pending the findings of the investigation by the Teaching Regulation Agency.

Where the police are involved, wherever possible the school will ask the police at the start of the investigation to obtain consent from the individuals involved to share their statements and evidence for use in the school's disciplinary process, should this be required at a later point.

Additional considerations for supply teachers and all contracted staff

If there are concerns or an allegation is made against someone not directly employed by the school, such as a supply teacher or contracted staff member provided by an agency, we will take the actions below in addition to our standard procedures.

We will not decide to stop using an individual due to safeguarding concerns without finding out the facts and liaising with our LADO to determine a suitable outcome

The governing board will discuss with the agency whether it is appropriate to suspend the individual, or redeploy them to another part of the school, while the school carries out the investigation

We will involve the agency fully, but the school will take the lead in collecting the necessary information and providing it to the LADO as required

We will address issues such as information sharing, to ensure any previous concerns or allegations known to the agency are taken into account (we will do this, for example, as part of the allegations management meeting or by liaising directly with the agency where necessary)

When using an agency, we will inform them of our process for managing allegations, and keep them updated about our policies as necessary, and will invite the agency's HR manager or equivalent to meetings as appropriate.

Timescales

We will deal with all allegations as quickly and effectively as possible and will endeavour to comply with the following timescales, where reasonably practicable:

Any cases where it is clear immediately that the allegation is unsubstantiated or malicious should be resolved within 1 week

If the nature of an allegation does not require formal disciplinary action, appropriate action should be taken within 3 working days

If a disciplinary hearing is required and can be held without further investigation, this should be held within 15 working days. However, these are objectives only and where they are not met, we will endeavour to take the required action as soon as possible thereafter.

Specific actions

Action following a criminal investigation or prosecution

The case manager will discuss with the local authority's designated officer whether any further action, including disciplinary action, is appropriate and, if so, how to proceed, taking into account information provided by the police and/or children's social care services.

Conclusion of a case where the allegation is substantiated

If the allegation is substantiated and the individual is dismissed or the school ceases to use their services, or the individual resigns or otherwise ceases to provide their services, the school will make a referral to the DBS for consideration of whether inclusion on the barred lists is required.

If the individual concerned is a member of teaching staff, the school will consider whether to refer the matter to the Teaching Regulation Agency to consider prohibiting the individual from teaching.

Individuals returning to work after suspension

If it is decided on the conclusion of a case that an individual who has been suspended can return to work, the case manager will consider how best to facilitate this.

The case manager will also consider how best to manage the individual's contact with the child or children who made the allegation, if they are still attending the school.

Unsubstantiated, unfounded, false or malicious reports

If a report is:

Determined to be unsubstantiated, unfounded, false or malicious, the DSL will consider the appropriate next steps. If they consider that the child and/or person who made the allegation is in need of help, or the allegation may have been a cry for help, a referral to children's social care may be appropriate

Shown to be deliberately invented, or malicious, the school will consider whether any disciplinary action is appropriate against the individual(s) who made it

Unsubstantiated, unfounded, false or malicious allegations

If an allegation is:

Determined to be unsubstantiated, unfounded, false or malicious, the LADO and case manager will consider the appropriate next steps. If they consider that the child and/or person who made the allegation is in need of help, or the allegation may have been a cry for help, a referral to children's social care may be appropriate

Shown to be deliberately invented, or malicious, the school will consider whether any disciplinary action is appropriate against the individual(s) who made it

Confidentiality and information sharing

The school will make every effort to maintain confidentiality and guard against unwanted publicity while an allegation is being investigated or considered.

The case manager will take advice from the LADO, police and children's social care services, as appropriate, to agree:

- Who needs to know about the allegation and what information can be shared
- How to manage speculation, leaks and gossip, including how to make parents or carers of a child/children involved aware of their obligations with respect to confidentiality
- What, if any, information can be reasonably given to the wider community to reduce speculation
- How to manage press interest if, and when, it arises

Record-keeping

The case manager will maintain clear records about any case where the allegation or concern meets the criteria above and store them on the individual's confidential personnel file for the duration of the case.

The records of any allegation that, following an investigation, is found to be malicious or false will be deleted from the individual's personnel file (unless the individual consents for the records to be retained on the file).

For all other allegations (which are not found to be malicious or false), the following information will be kept on the file of the individual concerned:

- A clear and comprehensive summary of the allegation
- Details of how the allegation was followed up and resolved
- Notes of any action taken, decisions reached and the outcome
- A declaration on whether the information will be referred to in any future reference

In these cases, the school will provide a copy to the individual, in agreement with children's social care or the police as appropriate.

Where records contain information about allegations of sexual abuse, we will preserve these for the Independent Inquiry into Child Sexual Abuse (IICSA), for the term of the inquiry. We will retain all other records at least until the individual has reached normal pension age, or for 10 years from the date of the allegation if that is longer.

References

When providing employer references, we will:

Not refer to any allegation that has been found to be false, unfounded, unsubstantiated or malicious, or any repeated allegations which have all been found to be false, unfounded, unsubstantiated or malicious

Include substantiated allegations, provided that the information is factual and does not include opinions

Learning lessons

After any cases where the allegations are *substantiated*, the case manager will review the circumstances of the case with the local authority's designated officer to determine whether there are any improvements that we can make to the school's procedures or practice to help prevent similar events in the future.

This will include consideration of (as applicable):

- Issues arising from the decision to suspend the member of staff
- The duration of the suspension
- Whether or not the suspension was justified

- The use of suspension when the individual is subsequently reinstated. We will consider how future investigations of a similar nature could be carried out without suspending the individual

For all other cases, the case manager will consider the facts and determine whether any improvements can be made.

Non-recent allegations

Abuse can be reported, no matter how long ago it happened.

We will report any non-recent allegations made by a child to the LADO in line with our local authority's procedures for dealing with non-recent allegations.

Where an adult makes an allegation to the school that they were abused as a child, we will advise the individual to report the allegation to the police.

Section 2: concerns that do not meet the harm threshold

This section applies to all concerns (including allegations) about members of staff, including supply teachers, volunteers and contractors, which do not meet the harm threshold set out in section 1 above.

Concerns may arise through, for example:

- Suspicion

- Complaint

- Disclosure made by a child, parent or other adult within or outside the school

- Pre-employment vetting checks

We recognise the importance of responding to and dealing with any concerns in a timely manner to safeguard the welfare of children.

Definition of low-level concerns

The term 'low-level' concern is any concern – no matter how small – that an adult working in or on behalf of the school may have acted in a way that:

- Is inconsistent with the staff code of conduct, including inappropriate conduct outside of work, **and**

- Does not meet the allegations threshold or is otherwise not considered serious enough to consider a referral to the designated officer at the local authority

Examples of such behaviour could include, but are not limited to:

- Being overly friendly with children

- Having favourites

- Taking photographs of children on their mobile phone

- Engaging with a child on a one-to-one basis in a secluded area or behind a closed door

- Using inappropriate sexualised, intimidating or offensive language

Sharing low-level concerns

We recognise the importance of creating a culture of openness, trust and transparency to encourage all staff to share low-level concerns so that they can be addressed appropriately.

We will create this culture by:

- Ensuring staff are clear about what appropriate behaviour is, and are confident in distinguishing expected and appropriate behaviour from concerning, problematic or inappropriate behaviour, in themselves and others

- Empowering staff to share any low-level concerns as per section 7.7 of this policy

- Empowering staff to self-refer

- Addressing unprofessional behaviour and supporting the individual to correct it at an early stage

- Providing a responsive, sensitive and proportionate handling of such concerns when they are raised

- Helping to identify any weakness in the school's safeguarding system

We have an experienced group of DSLs who make sure safeguarding is high profile.

Responding to low-level concerns

If the concern is raised via a third party, the headteacher will collect evidence where necessary by speaking:

- Directly to the person who raised the concern, unless it has been raised anonymously

- To the individual involved and any witnesses

The headteacher and DSLs will use the information collected to categorise the type of behaviour and determine any further action, in line with the school's code of conduct. The code of conduct is a crucial document and is signed at induction by all new staff

Record keeping

All low-level concerns will be recorded in writing. In addition to details of the concern raised, records will include the context in which the concern arose, any action taken and the rationale for decisions and action taken.

Records will be:

- Kept confidential, held securely and comply with the DPA 2018 and UK GDPR

- Reviewed so that potential patterns of concerning, problematic or inappropriate behaviour can be identified. Where a pattern of such behaviour is identified, we will decide on a course of action, either through our disciplinary procedures or, where a pattern of behaviour moves from a concern to meeting the harms threshold as described in section 1 of this appendix, we will refer it to the designated officer at the local authority

- Retained at least until the individual leaves employment at the school

Where a low-level concern relates to a supply teacher or contractor, we will notify the individual's employer, so any potential patterns of inappropriate behaviour can be identified.

References

We will not include low-level concerns in references unless:

The concern (or group of concerns) has met the threshold for referral to the designated officer at the local authority and is found to be substantiated; and/or

The concern (or group of concerns) relates to issues which would ordinarily be included in a reference, such as misconduct or poor performance